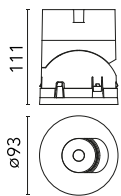


## Light Shadow Pro Ø90 Adjustable Optic Flood

■ 03.9943.06 - Chrome

LED lighting module, with low glare, to be inserted in the recessed frames (not included), installation through a bayonet system with interchangeable spots. Remote driver not included.

LED lighting module, with low glare, to be inserted in the recessed frames (not included), installation through a bayonet system with interchangeable spots. Remote driver not included.

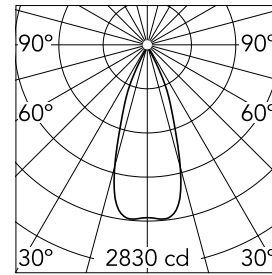


### Main specifications

<b>Number of heads</b>	1	<b>Net lumen (lm)</b>	1137
<b>Lamp category</b>	LED	<b>Mountings</b>	Recessed
<b>Power (W)</b>	18W	<b>Environment</b>	Indoor
<b>CCT (K)</b>	4000K		
<b>CRI</b>	90		

### Optical

<b>Lighting type</b>	Direct
<b>LED type</b>	LED array
<b>Light distribution</b>	Symmetric
<b>Optical type</b>	Flood
<b>Beam angle (°)</b>	37
<b>Beam angle C90-270 (°)</b>	37



<b>Beam Angle:</b> 37°		
<b>h(m)</b>	<b>E(lx)</b>	<b>D(m)</b>
1	2830	0.67
2	708	1.35
3	314	2.02
4	177	2.69
5	113	3.37

Luminous flux luminaire  
1137 lm

### Electrical

<b>Current (mA)</b>	500	<b>Insulation class</b>	III
<b>Dimmable</b>	Yes		
<b>Driver</b>	Remote		
<b>Driver type</b>	Electronic, Electronic dimmmable 1- 10V, Electronic dimmmable DALI		
<b>Emergency</b>	Without		

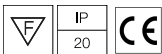
### Physical

<b>Color</b>	Chrome	<b>Spot diameter (mm)</b>	90
<b>Orientation</b>	Adjustable		
<b>Recessed depth (mm)</b>	111		
<b>Weight (kg)</b>	0.54		
<b>Tilt (°)</b>	30		

### Note

Preliminary photometries.

### Certification / Marking



## Light Shadow Pro Ø90 Adjustable Optic Flood



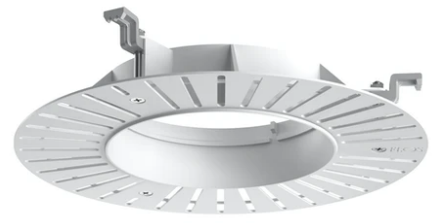
---

Installation Frame Trim  
08.0165.40



---

Installation Frame Trim  
08.0165.14



---

Installation Frame No Trim  
08.0193.00