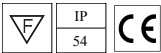
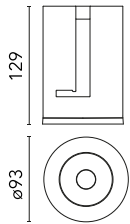


Light Shadow Pro Ø 90 Fixed Optic Spot

New

■ 03.9960.14 - Black

LED lighting module, with low glare, to be inserted in the recessed frames (not included), installation through a bayonet system with interchangeable spots. Remote driver not included.

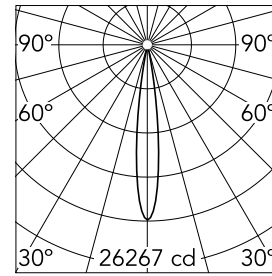


Main specifications

Number of heads	1	Net lumen (lm)	1817
Lamp category	LED	Mountings	Recessed
Power (W)	22W	Environment	Indoor dry location
CCT (K)	2700K		
CRI	90		

Optical

Lighting type	Direct
LED type	LED array
Light distribution	Symmetric
Optical type	Spot
Beam angle (°)	14
Beam angle C90-270 (°)	14



Beam Angle:	14°		
h(m)	E(lx)	D(m)	
1	26267	0.25	
2	6567	0.49	
3	2919	0.74	
4	1642	0.98	
5	1051	1.23	

Luminous flux luminaire
1817 lm

Electrical

Current (mA)	600	Insulation class	III
Dimmable	Yes		
Driver	Remote excluded		
Driver type	Non Dimmable, Dimmable DALI 2, Dimmable, Dimmable Casambi, Dimmable 1-10V, Dimmable DALI 1, Mains Cut Dimming		
Emergency	Without		

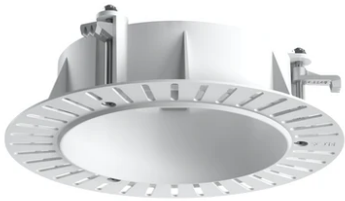
Physical

Color	Black
Orientation	Fixed
Recessed depth (mm)	129
Weight (kg)	0.54
Spot diameter (mm)	90

Note

Please select 500 mA setting in the remote driver to match the power of the Adjustable version.

Light Shadow Pro Ø 90 Fixed Optic Spot



Installation Frame No Trim
08.0193.00



Continuous current power supply, 0/1-10V dimmable, 220/240V – 50/60Hz,
300mA-16W / 350mA-18W / 400mA-21W
/ 500mA-27W / 600mA-32W / 650mA-35W /
700/750/800/900/950/1000/1050mA-36W
60.9439



Installation Frame Trim
08.0161.40



Continuous current supply source 240V – 50/60Hz with dimmable DALI 2, push dimming. 300mA-16W / 350mA-18W / 400mA-21W / 500mA-27W / 600mA-32W / 650mA-35W / 700/750/800/900/950/1000/1050mA-38W
60.9186



Continuous current power supply 220/240V – 50/60Hz. Adjustable Current 300mA-13W / 350mA-15W / 400mA-18W / 450mA-20W / 500mA-22W / 550mA-24W / 600mA-27W / 650mA-29W / 700mA-31W / 750mA-32W / 800mA-33W / 850mA-35W / 900mA-38W / 950mA-40W / 1000/1050mA-42W
60.9162



Continuous current power supply of 12-20W, 110/240V – 50/60Hz with power current selected through adjustable 350mA – 17W / 400mA – 19W / 450 / 550 / 600 / 700mA – 20W regulable Dali 1 y Dali 2
60.9222



Continuous current power supply,
Mains dimming, leading & trailing edge
220/240V – 50/60Hz, 300mA-14W /
350mA-17W / 400mA-19W /
450/500/600/650/700/750/800/900mA –
20W
60.9467

Installation Frame Trim
08.0161.14

Non dimmable continuous current
power supply of 24W, 110/277V –
50/60Hz, with power current selected
through adjustable 500 mA/600 mA
switch
60.9523



Continuous current power supply of
13-20W, 110/240V – 50/60Hz with power
current selected through adjustable
300 mA – 15W / 350 mA – 18W /
400/450/500/550/600/
650/700/750/800/850/900 mA – 15W.
switch. 0/1-10V or push dimming
60.9188