



Light Shadow Pro Ø 90 Fixed Optic Flood

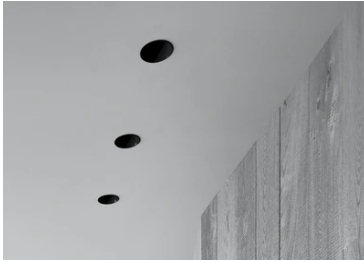
New

03.9966.06 - Chrome

LED lighting module, with low glare, to be inserted in the recessed frames (not included), installation through a bayonet system with interchangeable spots. Remote driver not included.

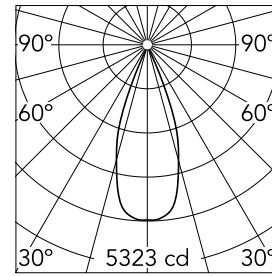
Main specifications

Number of heads	1	Net lumen (lm)	1921
Lamp category	LED	Mountings	Recessed
Power (W)	22W	Environment	Indoor dry location
CCT (K)	3000K		
CRI	90		



Optical

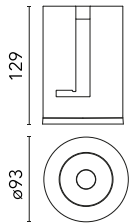
Lighting type	Direct
LED type	LED array
Light distribution	Symmetric
Optical type	Flood
Beam angle (°)	39
Beam angle C90-270 (°)	39



Beam Angle: 39°

h(m)	E(lx)	D(m)
1	5323	0.70
2	1331	1.40
3	591	2.10
4	333	2.81
5	213	3.51

Luminous flux luminaire
1921 lm



Electrical

Current (mA)	600	Insulation class	III
Dimmable	Yes		
Driver	Remote excluded		
Driver type	Non Dimmable, Dimmable DALI 2, Dimmable, Dimmable Casambi, Dimmable 1-10V, Dimmable DALI 1, Mains Cut Dimming		
Emergency	Without		

Physical

Color	Chrome
Orientation	Fixed
Recessed depth (mm)	129
Weight (kg)	0.54
Spot diameter (mm)	90

Note

Please select 500 mA setting in the remote driver to match the power of the Adjustable version.



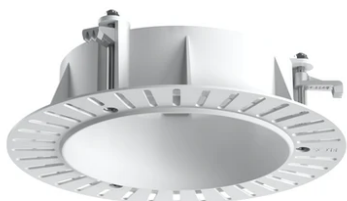
Light Shadow Pro Ø 90 Fixed Optic Flood



Continuous current supply source 240V
– 50/60Hz with dimmable DALI 2, push
dimming. 300mA-16W / 350mA-18W /
400mA-21W / 500mA-27W / 600mA-32W
/ 650mA-35W
700/750/800/900/950/1000/1050mA-38W
60.9186

Installation Frame Trim
08.0161.14

Installation Frame Trim
08.0161.40



Installation Frame No Trim
08.0193.00

Non dimmable continuous current
power supply of 24W, 110/277V –
50/60Hz, with power current selected
through adjustable 500 mA/600 mA
switch
60.9523

Continuous current power supply,
dimmable Casambi 220/240V-50/60Hz,
300mA-16W / 350mA-18,5W / 400mA-
21,5W / 450mA-24W / 500mA-27W /
600mA-32W / 650mA-35W / 700mA-36W
/750/800/900/950/1000/1050/1200mA –
38W
60.9207



Continuous current power supply
220/240V – 50/60Hz. Adjustable Current
300mA-13W / 350mA-15W / 400mA-18W
/ 450mA-20W / 500mA-22W / 550mA-
24W / 600mA-27W / 650mA-29W /
700mA-31W / 750mA-32W / 800mA-33W
/ 850mA-35W / 900mA-38W / 950mA-
40W / 1000/1050mA-42W
60.9162



Continuous current power supply of
13-20W, 110/240V – 50/60Hz with power
current selected through adjustable
300 mA – 15W / 350 mA – 18W /
400/450/500/550/600/
650/700/750/800/850/900 mA – 15W.
switch. 0/1-10V or push dimming
60.9188



Continuous current power supply of
12-20W, 110/240V – 50/60Hz with power
current selected through adjustable
350mA – 17W / 400mA – 19W / 450 / 550
/ 600 / 700mA – 20W regulable Dali 1 y
Dali 2
60.9222



Continuous current power supply,
Mains dimming, leading & trailing edge
220/240V – 50/60Hz, 300mA-14W /
350mA-17W / 400mA-19W /
450/500/600/650/700/750/800/900mA –
20W
60.9467



Continuous current power supply, 0/1-
10V dimmable, 220/240V – 50/60Hz,
300mA-16W / 350mA-18W / 400mA-21W
/ 500mA-27W / 600mA-32W / 650mA-
35W /
700/750/800/900/950/1000/1050mA-36W
60.9439