



Light Shadow Pro Ø 90 Fixed Optic Flood

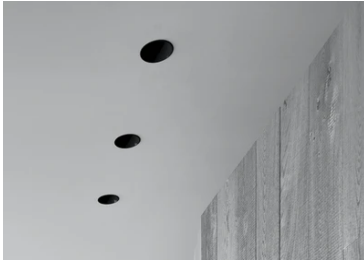
New

03.9922.06 - Chrome

LED lighting module, with low glare, to be inserted in the recessed frames (not included), installation through a bayonet system with interchangeable spots. Remote driver not included.

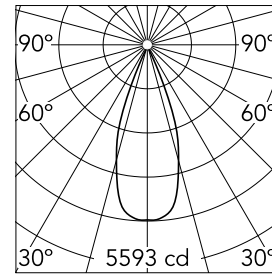
Main specifications

Number of heads	1	Net lumen (lm)	2018
Lamp category	LED	Mountings	Recessed
Power (W)	22W	Environment	Indoor dry location
CCT (K)	4000K		
CRI	90		



Optical

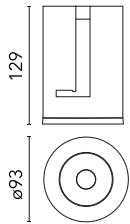
Lighting type	Direct
LED type	LED array
Light distribution	Symmetric
Optical type	Flood
Beam angle (°)	39
Beam angle C90-270 (°)	39



Beam Angle: 39°

h(m)	E(lx)	D(m)
1	5593	0.70
2	1398	1.40
3	621	2.10
4	350	2.81
5	224	3.51

Luminous flux luminaire
2018 lm



Electrical

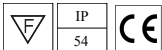
Current (mA)	600	Insulation class	III
Dimmable	Yes		
Driver	Remote excluded		
Driver type	Non Dimmable, Dimmable DALI 2, Dimmable, Dimmable Casambi, Dimmable 1-10V, Dimmable DALI 1, Mains Cut Dimming		
Emergency	Without		

Physical

Color	Chrome
Orientation	Fixed
Recessed depth (mm)	129
Spot diameter (mm)	90

Note

Please select 500 mA setting in the remote driver to match the power of the Adjustable version.



Light Shadow Pro Ø 90 Fixed Optic Flood



Non dimmable continuous current power supply of 24W, 110/277V – 50/60Hz, with power current selected through adjustable 500 mA/600 mA switch
60.9523



Continuous current power supply of 13-20W, 110/240V – 50/60Hz with power current selected through adjustable 300 mA – 15W / 350 mA – 18W / 400/450/500/550/600/ 650/700/750/800/850/900 mA – 15W. switch. 0/1-10V or push dimming
60.9188



Continuous current power supply, Mains dimming, leading & trailing edge 220/240V – 50/60Hz, 300mA-14W / 350mA-17W / 400mA-19W / 450/500/600/650/700/750/800/900mA – 20W
60.9467



Continuous current supply source 240V – 50/60Hz with dimmable DALI 2, push dimming. 300mA-16W / 350mA-18W / 400mA-21W / 500mA-27W / 600mA-32W / 650mA-35W
700/750/800/900/950/1000/1050mA-38W
60.9186



Continuous current power supply of 12-20W, 110/240V – 50/60Hz with power current selected through adjustable 350mA – 17W / 400mA – 19W / 450 / 550 / 600 / 700mA – 20W regulable Dali 1 y Dali 2
60.9222



Continuous current power supply, 0/1-10V dimmable, 220/240V – 50/60Hz, 300mA-16W / 350mA-18W / 400mA-21W / 500mA-27W / 600mA-32W / 650mA-35W / 700/750/800/900/950/1000/1050mA-36W
60.9439



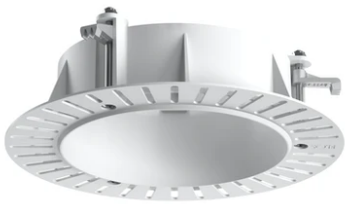
Installation Frame Trim
08.0161.40



Installation Frame Trim
08.0161.14



Continuous current power supply
220/240V – 50/60Hz. Adjustable Current
300mA-13W / 350mA-15W / 400mA-18W
/ 450mA-20W / 500mA-22W / 550mA-
24W / 600mA-27W / 650mA-29W /
700mA-31W / 750mA-32W / 800mA-33W
/ 850mA-35W / 900mA-38W / 950mA-
40W / 1000/1050mA-42W
60.9162



Installation Frame No Trim
08.0193.00