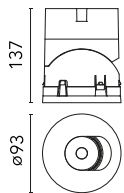


## Light Shadow Pro Ø 90 Adjustable Optic Super Spot

New

03.9980.40 - White

LED lighting module, with low glare, to be inserted in the recessed frames (not included), installation through a bayonet system with interchangeable spots. Remote driver not included.

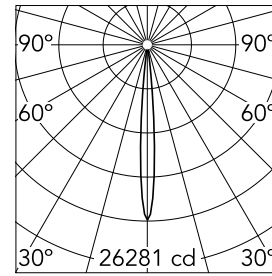


### Main specifications

<b>Number of heads</b>	1	<b>Net lumen (lm)</b>	770
<b>Lamp category</b>	LED	<b>Mountings</b>	Recessed
<b>Power (W)</b>	10W	<b>Environment</b>	Indoor dry location
<b>CCT (K)</b>	2700K		
<b>CRI</b>	90		

### Optical

<b>Lighting type</b>	Direct
<b>LED type</b>	LED array
<b>Light distribution</b>	Symmetric
<b>Optical type</b>	Super spot
<b>Beam angle (°)</b>	9
<b>Beam angle C90-270 (°)</b>	9



<b>Beam Angle:</b>	9°		
<b>h(m)</b>	<b>E(lx)</b>	<b>D(m)</b>	
1	26281	0.16	
2	6570	0.31	
3	2920	0.47	
4	1643	0.62	
5	1051	0.78	

Luminous flux luminaire  
770 lm

### Electrical

<b>Current (mA)</b>	800	<b>Insulation class</b>	III
<b>Dimmable</b>	Yes		
<b>Driver</b>	Remote excluded		
<b>Driver type</b>	Non Dimmable, Dimmable DALI 2, Dimmable, Dimmable Casambi, Dimmable 1-10V, Dimmable DALI 1, Mains Cut Dimming		
<b>Emergency</b>	Without		

### Physical

<b>Color</b>	White	<b>Rotation (°)</b>	355
<b>Orientation</b>	Adjustable	<b>Spot diameter (mm)</b>	90
<b>Recessed depth (mm)</b>	111		
<b>Weight (kg)</b>	0.54		
<b>Tilt (°)</b>	35		

## Light Shadow Pro Ø 90 Adjustable Optic Super Spot



Continuous current power supply of 12-20W, 110/240V – 50/60Hz with power current selected through adjustable 350mA – 17W / 400mA – 19W / 450 / 550 / 600 / 700mA – 20W regulable Dali 1 y Dali 2  
60.9222



Continuous current supply source 240V – 50/60Hz with dimmable DALI 2, push dimming. 300mA-16W / 350mA-18W / 400mA-21W / 500mA-27W / 600mA-32W / 650mA-35W / 700/750/800/900/950/1000/1050mA-38W  
60.9186



Continuous current power supply, Mains dimming, leading & trailing edge 220/240V – 50/60Hz, 300mA-14W / 350mA-17W / 400mA-19W / 450/500/600/650/700/750/800/900mA – 20W  
60.9467



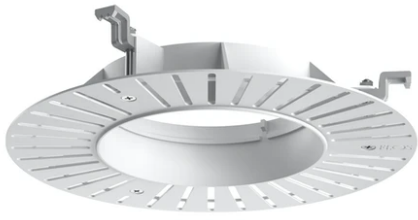
Continuous current power supply of 13-20W, 110/240V – 50/60Hz with power current selected through adjustable 300 mA – 15W / 350 mA – 18W / 400/450/500/550/600/ 650/700/750/800/850/900 mA – 15W. switch. 0/1-10V or push dimming  
60.9188



Continuous current power supply, dimmable Casambi 220/240V-50/60Hz, 300mA-16W / 350mA-18,5W / 400mA-21,5W / 450mA-24W / 500mA-27W / 600mA-32W / 650mA-35W / 700mA-36W / 750/800/900/1000/1050mA – 38W  
60.9207



Continuous current power supply 220/240V – 50/60Hz. Adjustable Current 300mA-13W / 350mA-15W / 400mA-18W / 450mA-20W / 500mA-22W / 550mA-24W / 600mA-27W / 650mA-29W / 700mA-31W / 750mA-32W / 800mA-33W / 850mA-35W / 900mA-38W / 950mA-40W / 1000/1050mA-42W  
60.9162



---

Installation Frame No Trim  
08.0167.00

---

Continuous current power supply, 0/1-  
10V dimmable, 220/240V – 50/60Hz,  
300mA-16W / 350mA-18W / 400mA-21W  
/ 500mA-27W / 600mA-32W / 650mA-  
35W /  
700/750/800/900/950/1000/1050mA-36W  
60.9439

---

Installation Frame Trim  
08.0165.40



---

Installation Frame Trim  
08.0165.14