

Light Shadow DOTS - Single Spot Module. Set of 4 Spots

03.8610.06A - Chrome



LED lighting module, with low glare, to be inserted in the recessed frames (not included), installation through a bayonet system with interchangeable spots. Available in one-light versions and groups of two and four lights. Driver not included, the driver has to be directly connected to the embedding frames.

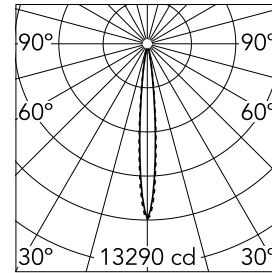
Main specifications

Number of heads	4	Net lumen (lm)	754
Lamp category	LED	Mountings	Recessed
Power (W)	10.8W	Environment	Indoor dry location
CCT (K)	2700K		
CRI	90		



Optical

Lighting type	Direct
LED type	Power LED
Light distribution	Symmetric
Optical type	Spot
Beam angle (°)	10
Beam angle C90-270 (°)	10



Beam Angle: 10°

h(m)	E(lx)	D(m)
------	-------	------

1	13290	0.18
---	-------	------

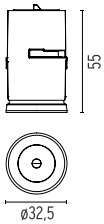
2	3322	0.36
---	------	------

3	1477	0.55
---	------	------

4	831	0.73
---	-----	------

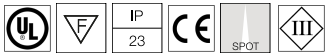
5	532	0.91
---	-----	------

Luminous flux luminaire
754 lm



Electrical

Voltage (V)	4x3	Emergency	Without
Current (mA)	900	Insulation class	III
Dimmable	Yes		
Driver	Remote excluded		
Driver type	Non Dimmable, Dimmable 0-10V, Dimmable Casambi, Dimmable DALI		



Physical

Color	Chrome
Orientation	Fixed
Recessed depth (mm)	75
Weight (kg)	0.20
Spot diameter (mm)	32.5

Light Shadow DOTS - Single Spot Module. Set of 4 Spots



Continuous current power supply, dimmable Casambi 220/240V-50/60Hz, 300mA-16W / 350mA-18,5W / 400mA-21,5W / 450mA-24W / 500mA-27W / 600mA-32W / 650mA-35W / 700mA-36W / 750/800/900/1000/1050mA – 38W
60.9207

70 mm divider to keep the spacing between spots when putting together 70 mm modules
08.0586.00

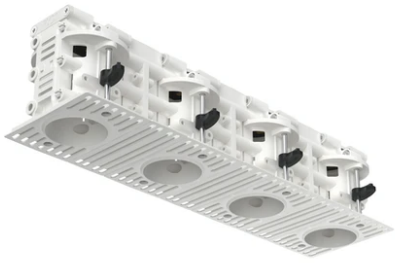
Non dimmable continuous current power supply of 20W, dimmable 0-10V, 220/240V – 50/60Hz
60.9414



Non dimmable continuous current power supply of 15-20W, 110/240V – 50/60Hz, with power current selected through adjustable 350 mA-15W / 500 mA / 550 / 700 / 850 mA / 900 mA – 20W
60.8911

Continuous current power supply 220/240V – 50/60Hz. Adjustable Current 300mA-13W / 350mA-15W / 400mA-18W / 450mA-20W / 500mA-22W / 550mA-24W / 600mA-27W / 650mA-29W / 700mA-31W / 750mA-32W / 800mA-33W / 850mA-35W / 900mA-38W / 950mA-40W / 1000/1050mA-42W
60.9162

Pre-installation frame. 4L – int 43
08.0582.00



Pre-installation frame. 4L – int 70
08.0584.00