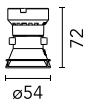
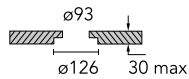
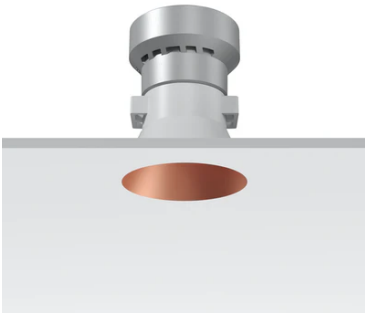


Kap Ø50 Fixed Optic Medium

■ 05.7306.CU - Copper

Recessed luminaire with LED light source. Power supply not included. Remote power supply to be installed in an accessible place.

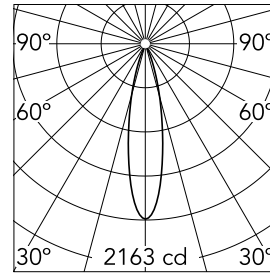


Main specifications

Number of heads	1	Net lumen (lm)	449
Lamp category	LED	Mountings	Ceiling recessed
Power (W)	7.5W	Environment	Indoor
CCT (K)	3000K		
CRI	90		

Optical

Lighting type	Direct
LED type	LED array
Light distribution	Symmetric
Optical type	Medium
Beam angle (°)	22
Beam angle C90-270 (°)	22



Beam Angle: 22°

h(m)	E(lx)	D(m)
1	2163	0.40
2	541	0.79
3	240	1.19
4	135	1.59
5	87	1.99

Luminous flux luminaire
449 lm (EXTREME CUT OFF)

Electrical

Voltage (V)	35	Emergency	Without
Current (mA)	200	Insulation class	III
Dimmable	Yes		
Driver	Remote		
Driver type	Electronic, Electronic dimmable, Electronic dimmable 1-10V, Electronic dimmable DALI		

Certification / Marking



Physical

Color	Copper	Length (mm)	54
Orientation	Fixed		
Recessed depth (mm)	100		
Weight (kg)	0,136		
Spot diameter (mm)	50		

Kap Ø50 Fixed Optic Medium



Power supply non dimmable.
Multicurrent 125-500mA; 5,5-22W
60.9160



Continuous current power supply
dimmable 0-10V. 20W
60.9483



Continuous current power supply
dimmable DALI 220/240V – 50/60Hz.
20W – 200 mA.
60.9604



Casambi Broadcast. Remote Installation
60.9392



Continuous current power supply of
7,2-24W, 220/240V – 50/60Hz
60.9421