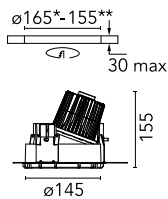
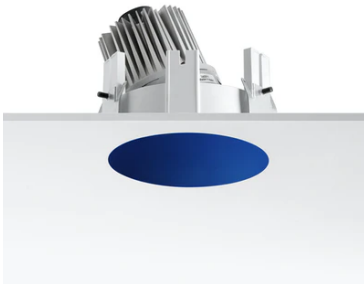


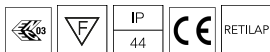
## Kap Ø145 Wall-Washer

■ 03.4588.BU - Blue

Recessed luminaire with LED light source. Remote electronic transformer 220/240V included.



\*NO TRIM  
\*\*TRIM

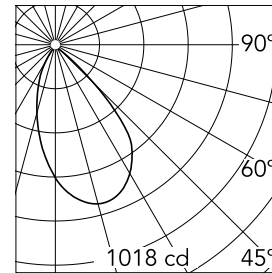


### Main specifications

<b>Number of heads</b>	1	<b>Net lumen (lm)</b>	1026
<b>Lamp category</b>	LED	<b>Mountings</b>	Ceiling recessed
<b>Power (W)</b>	17W	<b>Environment</b>	Indoor
<b>CCT (K)</b>	3000K		
<b>CRI</b>	90		

### Optical

<b>Lighting type</b>	Indirect, Direct
<b>LED type</b>	LED array
<b>Light distribution</b>	Asymmetric
<b>Optical type</b>	Wall-washer
<b>Beam angle (°)</b>	56
<b>Beam angle C90-270 (°)</b>	63
<b>Efficiency (lm/W)</b>	60



Beam Angle: 56°

h(m)	E(lx)	D(m)
1	1018	1.17
2	254	2.34
3	113	3.51
4	64	4.68
5	41	5.85

Luminous flux luminaire  
1026 lm (EXTREME CUT OFF)

### Electrical

<b>Frequency (Hz)</b>	50/60	<b>Emergency</b>	Without
<b>Voltage (V)</b>	27.40	<b>Insulation class</b>	II
<b>Dimmable</b>	No		
<b>Driver</b>	Remote		
<b>Driver type</b>	Electronic		

### Physical

<b>Color</b>	Blue
<b>Orientation</b>	Fixed
<b>Weight (kg)</b>	0.94
<b>Spot diameter (mm)</b>	145

### Note

Pre-installation frame. To be ordered separately.

## Kap Ø145 Wall-Washer



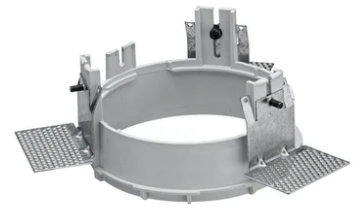
---

Installation Frame Trim  
08.8491.BU



---

Installation Frame Trim  
08.8491.14



---

Installation Frame No Trim  
08.8251.00



---

Installation Frame Trim  
08.8491.30



---

Installation Frame Trim  
08.8491.GL