

\*NO TRIM  
\*\*TRIM

## Certification / Marking



## Kap Ø145 Deep Dali

■ 03.4482.BUCDA - Blue

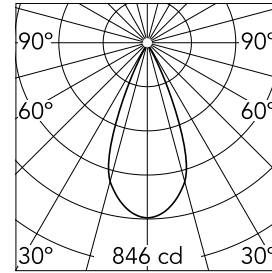
Recessed luminaire with LED light source. Remote electronic transformer 220/240V included.

### Main specifications

|                        |       |                       |                  |
|------------------------|-------|-----------------------|------------------|
| <b>Number of heads</b> | 1     | <b>Net lumen (lm)</b> | 406              |
| <b>Lamp category</b>   | LED   | <b>Mountings</b>      | Ceiling recessed |
| <b>Power (W)</b>       | 17W   | <b>Environment</b>    | Indoor           |
| <b>CCT (K)</b>         | 3000K |                       |                  |
| <b>CRI</b>             | 98    |                       |                  |

### Optical

|                               |              |
|-------------------------------|--------------|
| <b>Lighting type</b>          | Direct       |
| <b>LED type</b>               | Phosphor LED |
| <b>Light distribution</b>     | Symmetric    |
| <b>Optical type</b>           | Medium       |
| <b>Beam angle (°)</b>         | 44           |
| <b>Beam angle C90-270 (°)</b> | 44           |



Beam Angle: 44°

| h(m) | E(lx) | D(m) |
|------|-------|------|
| 1    | 846   | 0.80 |
| 2    | 211   | 1.60 |
| 3    | 94    | 2.39 |
| 4    | 53    | 3.19 |
| 5    | 34    | 3.99 |

Luminous flux luminaire  
406 lm (EXTREME CUT OFF)

### Electrical

|                       |                          |                         |         |
|-----------------------|--------------------------|-------------------------|---------|
| <b>Frequency (Hz)</b> | 50/60                    | <b>Emergency</b>        | Without |
| <b>Voltage (V)</b>    | 18.40                    | <b>Insulation class</b> | II      |
| <b>Dimmable</b>       | Yes                      |                         |         |
| <b>Driver</b>         | Remote                   |                         |         |
| <b>Driver type</b>    | Electronic dimmable DALI |                         |         |

### Physical

|                           |       |
|---------------------------|-------|
| <b>Color</b>              | Blue  |
| <b>Orientation</b>        | Fixed |
| <b>Weight (kg)</b>        | 0.88  |
| <b>Spot diameter (mm)</b> | 145   |

### Note

Pre-installation frame. To be ordered separately.

## Kap Ø145 Deep Dali



---

Installation Frame Trim  
08.8491.BU



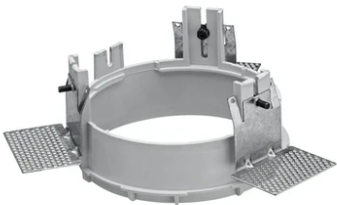
---

Installation Frame Trim  
08.8491.14



---

Installation Frame Trim  
08.8491.30



---

Installation Frame No Trim  
08.8156.00



---

Installation Frame Trim  
08.8491.GL