

\*NO TRIM  
\*\*TRIM



## Kap Ø145 Dali

03.4420.GLCDA - Gold

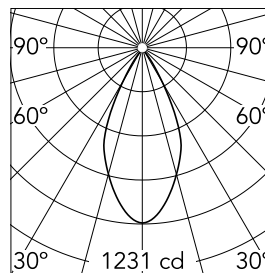
Recessed luminaire with LED light source. Remote electronic transformer 220/240V included.

### Main specifications

Number of heads	1	Net lumen (lm)	796
Lamp category	LED	Mountings	Ceiling recessed
Power (W)	17W	Environment	Indoor
CCT (K)	3000K		
CRI	98		

### Optical

Lighting type	Direct
LED type	Phosphor LED
Light distribution	Symmetric
Optical type	Flood
Beam angle (°)	49
Beam angle C90-270 (°)	49
Efficiency (lm/W)	46



Beam Angle: 49°

h(m)	E(lx)	D(m)
1	1231	0.92
2	308	1.84
3	137	2.76
4	77	3.68
5	49	4.60

Luminous flux luminaire  
796 lm (EXTREME CUT OFF)

### Electrical

Frequency (Hz)	50/60	Emergency	Without
Voltage (V)	18.40	Insulation class	II
Dimmable	Yes		
Driver	Remote		
Driver type	Electronic dimmable DALI		

### Physical

Color	Gold
Orientation	Fixed
Weight (kg)	0.88
Spot diameter (mm)	145

### Note

Pre-installation frame. To be ordered separately.

Kap Ø145 Dali



Installation Frame Trim  
08.8491.BU



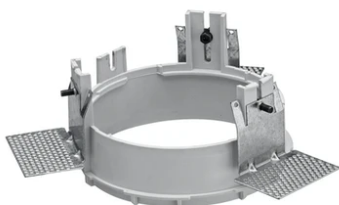
Installation Frame Trim  
08.8491.14



Installation Frame Trim  
08.8491.30



Installation can for concrete  
08.8421.00



Installation Frame No Trim  
08.8156.00



Installation Frame Trim  
08.8491.GL