

\*NO TRIM  
\*\*TRIM



## Kap Ø145 1-10V

■ 03.4420.74C1V - Black

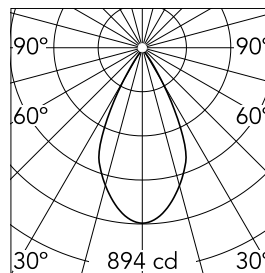
Recessed luminaire with LED light source. Remote electronic transformer 220/240V included.

### Main specifications

Number of heads	1	Net lumen (lm)	580
Lamp category	LED	Mountings	Ceiling recessed
Power (W)	17W	Environment	Indoor
CCT (K)	3000K		
CRI	98		

### Optical

Lighting type	Direct
LED type	Phosphor LED
Light distribution	Symmetric
Optical type	Flood
Beam angle (°)	52
Beam angle C90-270 (°)	52
Efficiency (lm/W)	34



Beam Angle: 52°

h(m)	E(lx)	D(m)
1	894	0.97
2	224	1.95
3	99	2.92
4	56	3.90
5	36	4.87

Luminous flux luminaire  
580 lm (EXTREME CUT OFF)

### Electrical

Frequency (Hz)	50/60	Emergency	Without
Voltage (V)	18.40	Insulation class	II
Dimmable	Yes		
Driver	Remote		
Driver type	Electronic		
	dimnable 1-10V		

### Physical

Color	Black
Orientation	Fixed
Weight (kg)	0.88
Spot diameter (mm)	145

### Note

Pre-installation frame. To be ordered separately.

Kap Ø145 1-10V



Installation Frame Trim  
08.8491.BU



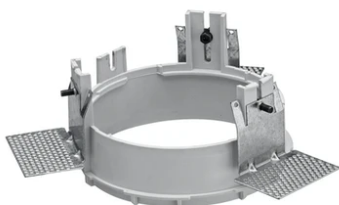
Installation Frame Trim  
08.8491.14



Installation Frame Trim  
08.8491.30



Installation can for concrete  
08.8421.00



Installation Frame No Trim  
08.8156.00



Installation Frame Trim  
08.8491.GL