

\*NO TRIM  
\*\*TRIM

## Kap Ø145

■ 03.4585.BU - Blue

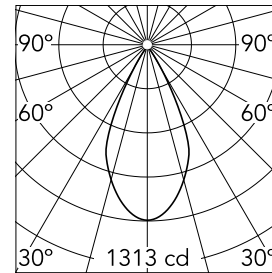
Recessed luminaire with LED light source. Remote electronic transformer 220/240V included.

### Main specifications

Number of heads	1	Net lumen (lm)	791
Lamp category	LED	Mountings	Ceiling recessed
Power (W)	17W	Environment	Indoor
CCT (K)	2700K		
CRI	90		

### Optical

Lighting type	Direct
LED type	LED array
Light distribution	Symmetric
Optical type	Flood
Beam angle (°)	50
Beam angle C90-270 (°)	50



Beam Angle: 50°

h(m)	E(lx)	D(m)
1	1313	0.93
2	328	1.86
3	146	2.79
4	82	3.72
5	53	4.65

Luminous flux luminaire  
791 lm (EXTREME CUT OFF)

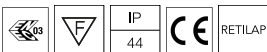
### Electrical

Frequency (Hz)	50/60	Emergency	Without
Voltage (V)	27.40	Insulation class	II
Dimmable	No		
Driver	Remote		
Driver type	Electronic		

### Physical

Color	Blue
Orientation	Fixed
Weight (kg)	0.88
Spot diameter (mm)	145

### Certification / Marking



### Note

Pre-installation frame. To be ordered separately.

## Kap Ø145



---

Installation Frame Trim  
08.8491.BU



---

Installation Frame Trim  
08.8491.14



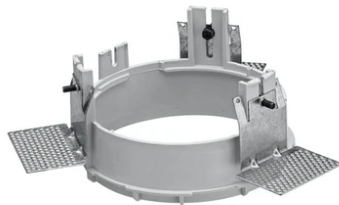
---

Installation Frame Trim  
08.8491.30



---

Installation can for concrete  
08.8421.00



---

Installation Frame No Trim  
08.8156.00



---

Installation Frame Trim  
08.8491.GL