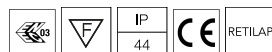


*NO TRIM
**TRIM



Kap Ø145

03.4584.GL - Gold

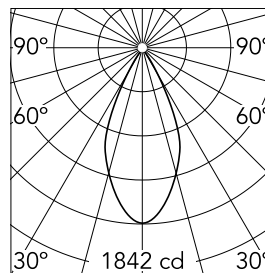
Recessed luminaire with LED light source. Remote electronic transformer 220/240V included.

Main specifications

Number of heads	1	Net lumen (lm)	1109
Lamp category	LED	Mountings	Ceiling recessed
Power (W)	17W	Environment	Indoor
CCT (K)	3000K		
CRI	90		

Optical

Lighting type	Direct
LED type	LED array
Light distribution	Symmetric
Optical type	Flood
Beam angle (°)	48
Beam angle C90-270 (°)	48
Efficiency (lm/W)	65



Beam Angle: 48°

h(m)	E(lx)	D(m)
1	1842	0.88
2	460	1.77
3	205	2.65
4	115	3.54
5	74	4.42

Luminous flux luminaire
1109 lm (EXTREME CUT OFF)

Electrical

Frequency (Hz)	50/60	Emergency	Without
Voltage (V)	27.40	Insulation class	II
Dimmable	No		
Driver	Remote		
Driver type	Electronic		

Physical

Color	Gold
Orientation	Fixed
Weight (kg)	0.88
Spot diameter (mm)	145

Note

Pre-installation frame. To be ordered separately.

Kap Ø145



Installation Frame Trim
08.8491.BU



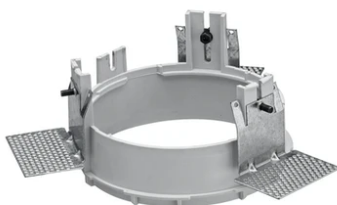
Installation Frame Trim
08.8491.14



Installation Frame Trim
08.8491.30



Installation can for concrete
08.8421.00



Installation Frame No Trim
08.8156.00



Installation Frame Trim
08.8491.GL