

*NO TRIM
**TRIM

Kap Ø145

03.4420.CUC - Copper

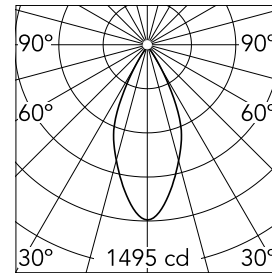
Recessed luminaire with LED light source. Remote electronic transformer 220/240V included.

Main specifications

| | | | |
|-----------------|-------|----------------|------------------|
| Number of heads | 1 | Net lumen (lm) | 796 |
| Lamp category | LED | Mountings | Ceiling recessed |
| Power (W) | 17W | Environment | Indoor |
| CCT (K) | 3000K | | |
| CRI | 98 | | |

Optical

| | |
|------------------------|--------------|
| Lighting type | Direct |
| LED type | Phosphor LED |
| Light distribution | Symmetric |
| Optical type | Flood |
| Beam angle (°) | 45 |
| Beam angle C90-270 (°) | 45 |



Beam Angle: 45°

| h(m) | E(lx) | D(m) |
|------|-------|------|
| 1 | 1495 | 0.83 |
| 2 | 374 | 1.66 |
| 3 | 166 | 2.49 |
| 4 | 93 | 3.33 |
| 5 | 60 | 4.16 |

Luminous flux luminaire
796 lm (EXTREME CUT OFF)

Electrical

| | | | |
|----------------|------------|------------------|---------|
| Frequency (Hz) | 50/60 | Emergency | Without |
| Voltage (V) | 18.40 | Insulation class | II |
| Dimmable | No | | |
| Driver | Remote | | |
| Driver type | Electronic | | |

Physical

| | |
|--------------------|--------|
| Color | Copper |
| Orientation | Fixed |
| Weight (kg) | 0.88 |
| Spot diameter (mm) | 145 |

Certification / Marking



Note

Pre-installation frame. To be ordered separately.

Kap Ø145



Installation Frame Trim
08.8491.BU



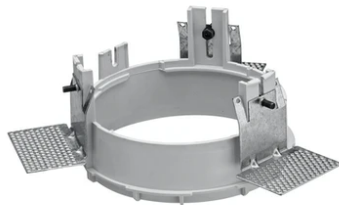
Installation Frame Trim
08.8491.14



Installation Frame Trim
08.8491.30



Installation can for concrete
08.8421.00



Installation Frame No Trim
08.8156.00



Installation Frame Trim
08.8491.GL