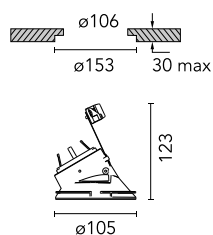
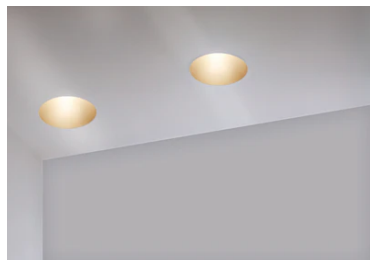


## Kap Ø105 Wall-Washer

05.7140.CU - Copper

Recessed 12V LED lamp luminaire. Remote transformer not included.



### Main specifications

Lamp category	LED
System power (W)	25.9
Mountings	Ceiling recessed
Environment	Indoor

### Optical

Lighting type	Direct
Lamp type	QR-CBC 51
Light distribution	Asymmetric
Optical type	Wall-washer

### Electrical

Frequency (Hz)	50/60
Voltage (V)	12
Lamp holder	GX5.3
Emergency	Without
Insulation class	II

### Physical

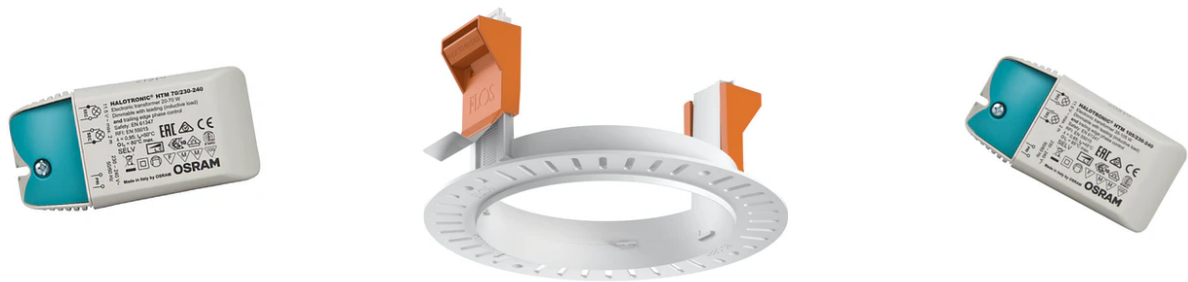
Color	Copper
Orientation	Fixed
Recessed depth (mm)	130
Weight (kg)	0,21
Spot diameter (mm)	105

### Note

Not suitable for lens accessories.



# Kap Ø105 Wall-Washer



12V Electronic Transformer 20-70W for  
LED Bulbs and Halogen Lamps  
60.9398

Installation frame No Trim  
08.0132.00

12V electronic transformer. 220/240V,  
50/60Hz. 35-105W  
60.9424