

Kap Ø105 Wall-Washer

■ 05.7140.BU - Blue

Recessed 12V LED lamp luminaire. Remote transformer not included.

Main specifications

| | |
|------------------|------------------|
| Lamp category | LED |
| System power (W) | 25.9 |
| Mountings | Ceiling recessed |
| Environment | Indoor |

Optical

| | |
|--------------------|-------------|
| Lighting type | Direct |
| Lamp type | QR-CBC 51 |
| Light distribution | Asymmetric |
| Optical type | Wall-washer |

Electrical

| | |
|------------------|---------|
| Frequency (Hz) | 50/60 |
| Voltage (V) | 12 |
| Lamp holder | GX5.3 |
| Emergency | Without |
| Insulation class | II |

Physical

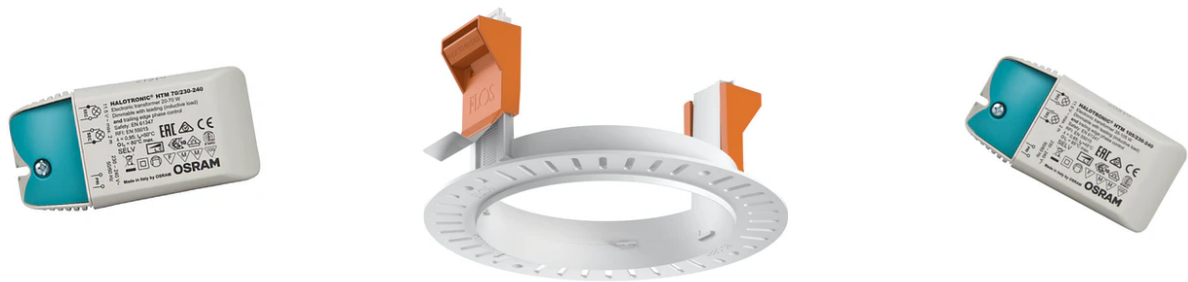
| | |
|---------------------|-------|
| Color | Blue |
| Orientation | Fixed |
| Recessed depth (mm) | 130 |
| Weight (kg) | 0,21 |
| Spot diameter (mm) | 105 |

Note

Not suitable for lens accessories.



Kap Ø105 Wall-Washer



12V Electronic Transformer 20-70W for
LED Bulbs and Halogen Lamps
60.9398

Installation frame No Trim
08.0132.00

12V electronic transformer. 220/240V,
50/60Hz. 35-105W
60.9424