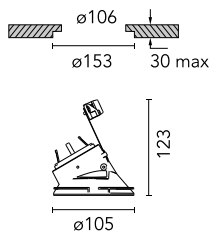


Kap Ø105 Wall-Washer

□ 05.7140.B1 - White

Recessed 12V LED lamp luminaire. Remote transformer not included. Fast&Perfect pre-installation frame. To be ordered separately.

Recessed 12V LED lamp luminaire. Remote transformer not included. Fast&Perfect pre-installation frame. To be ordered separately.



Main specifications

Lamp category	LED
System power (W)	25.9
Mountings	Ceiling recessed
Environment	Indoor

Optical

Lighting type	Direct
Lamp type	QR-CBC 51
Light distribution	Asymmetric
Optical type	Wall-washer

Electrical

Frequency (Hz)	50/60
Voltage (V)	12
Lamp holder	GX5.3
Emergency	Without
Insulation class	II

Physical

Color	White	Length (mm)	105
Orientation	Fixed		
Recessed depth (mm)	130		
Weight (kg)	0,21		
Spot diameter (mm)	105		

Certification / Marking



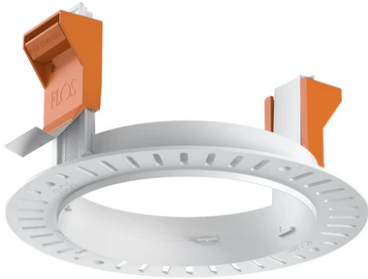
Kap Ø105 Wall-Washer



12V Electronic Transformer 20-70W for
LED Bulbs and Halogen Lamps
60.9398

12V electronic transformer. 220/240V,
50/60Hz. 35-105W
60.9424

Dimmable (Trailing Edge) 70W 12V
Electronic Transformer for LED Bulbs
and Halogen Lamps
60.8320



Installation frame No Trim
08.0132.00

Fast&Perfect tool ø153
08.9101.00