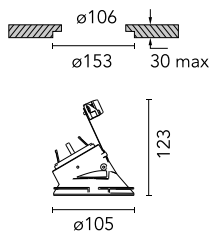


Kap Ø105 Wall-Washer

■ 05.7140.74 - Black

Recessed 12V LED lamp luminaire. Remote transformer not included.



Main specifications

Lamp category	LED
System power (W)	25.9
Mountings	Ceiling recessed
Environment	Indoor

Optical

Lighting type	Direct
Lamp type	QR-CBC 51
Light distribution	Asymmetric
Optical type	Wall-washer

Electrical

Frequency (Hz)	50/60
Voltage (V)	12
Lamp holder	GX5.3
Emergency	Without
Insulation class	II

Physical

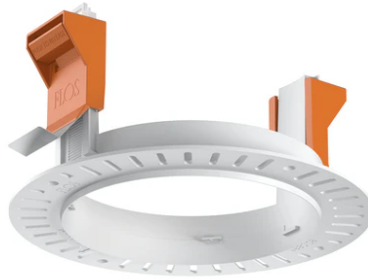
Color	Black
Orientation	Fixed
Recessed depth (mm)	130
Weight (kg)	0,21
Spot diameter (mm)	105

Note

Not suitable for lens accessories.



Kap Ø105 Wall-Washer



12V Electronic Transformer 20-70W for
LED Bulbs and Halogen Lamps
60.9398

Installation frame No Trim
08.0132.00

12V electronic transformer. 220/240V,
50/60Hz. 35-105W
60.9424