

## Kap Ø105 Fixed Optic Spot

05.7105.B1 - White

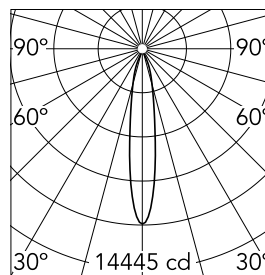
Recessed luminaire with LED light source. Remote transformer not included. Pre-installation frame. To be ordered separately.

### Main specifications

Number of heads	1	CRI	90
Lamp category	LED	Net lumen (lm)	2275
Power (W)	25.9W	Mountings	Ceiling recessed
System power (W)	25.9	Environment	Indoor
CCT (K)	3000K		

### Optical

Lighting type	Direct
LED type	LED array
Light distribution	Symmetric
Optical type	Spot
Beam angle (°)	17
Beam angle C90-270 (°)	17
Efficiency (lm/W)	54



Beam Angle: 17°

h(m)	E(lx)	D(m)
1	14445	0.30
2	3611	0.59
3	1605	0.89
4	903	1.18
5	578	1.48

Luminous flux luminaire  
2275 lm (EXTREME CUT OFF)

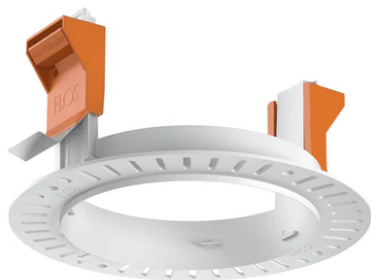
### Electrical

Voltage (V)	34	Emergency	Without
Current (mA)	650	Insulation class	III
Dimmable	Yes		
Driver	Remote		
Driver type	Electronic, Electronic dimmable, Electronic dimmable 1-10V, Electronic dimmable DALI		

### Physical

Color	White
Orientation	Fixed
Recessed depth (mm)	150
Weight (kg)	0,48
Spot diameter (mm)	105

## Kap Ø105 Fixed Optic Spot



Installation frame No Trim  
08.0132.00



Non dimmable continuous current  
power supply. 15-30W, 220/240V  
-50/60Hz with power current selected  
through adjustable switch.  
60.9592



Continuous current power supply of  
13-20W, 110\*/240V – 50/60Hz with  
power current selected through  
adjustable switch. 1-10V or push  
dimming.  
60.9188



Constant Current Power Supply for  
LED. Dimmable DALI. 10-20W  
60.8847



Continuous current power supply,  
dimmable Casambi, 220/240V –  
50/60Hz, 35W – 650mA / 36W – 700 mA.  
60.9207