

Kap Ø105 Fixed Optic Spot

■ 05.7100.CU - Copper

Recessed luminaire with LED light source. Remote transformer not included. Pre-installation frame. To be ordered separately.

Main specifications

Number of heads	1	CRI	90
Lamp category	LED	Mountings	Ceiling recessed
Power (W)	23W	Environment	Indoor
System power (W)	25.9		
CCT (K)	2700K		

Optical

Lighting type	Direct	Beam angle C90-270 (°)	17
LED type	LED array		
Light distribution	Symmetric		
Optical type	Spot		
Beam angle (°)	17		

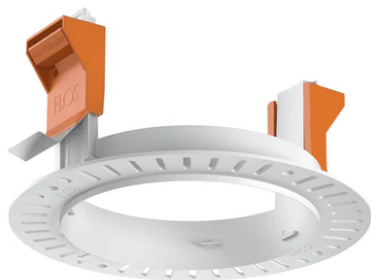
Electrical

Voltage (V)	34	Emergency	Without
Current (mA)	650	Insulation class	III
Dimmable	Yes		
Driver	Remote		
Driver type	Electronic, Electronic dimmable, Electronic dimmable 1-10V, Electronic dimmable DALI		

Physical

Color	Copper
Orientation	Fixed
Recessed depth (mm)	150
Weight (kg)	0,48
Spot diameter (mm)	105

Kap Ø105 Fixed Optic Spot



Installation frame No Trim
08.0132.00



Non dimmable continuous current power supply. 15-30W, 220/240V -50/60Hz with power current selected through adjustable switch. 350mA – 15W / 400mA – 17W / 450mA – 19W / 500mA – 22W / 550mA – 24W / 600mA – 26W / 650mA – 28W / 700mA – 30W no regulable
60.9592



Continuous current power supply, 0/1-10V dimmable, 220/240V – 50/60Hz, 36W – 700 mA
60.9439



Continuous current supply source of 240V – 50/60Hz with dimmable DALI 2
60.9186



Continuous current power supply, dimmable Casambi, 220/240V – 50/60Hz, 35W – 650mA / 36W – 700 mA.
60.9207