

Kap Ø105 Fixed Optic Medium

■ 05.7106.74 - Black

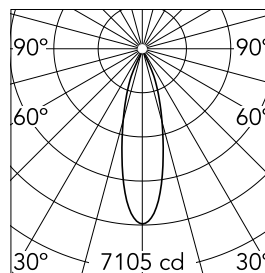
Recessed luminaire with LED light source. Remote transformer not included. Pre-installation frame. To be ordered separately.

Main specifications

Number of heads	1	CRI	90
Lamp category	LED	Net lumen (lm)	1825
Power (W)	25.9W	Mountings	Ceiling recessed
System power (W)	25.9	Environment	Indoor
CCT (K)	3000K		

Optical

Lighting type	Direct
LED type	LED array
Light distribution	Symmetric
Optical type	Medium
Beam angle (°)	27
Beam angle C90-270 (°)	27
Efficiency (lm/W)	70



Beam Angle: 27°

	h(m)	E(lx)	D(m)
1	7105	0.48	
2	1776	0.96	
3	789	1.44	
4	444	1.92	
5	284	2.40	

Luminous flux luminaire
1825 lm (EXTREME CUT OFF)

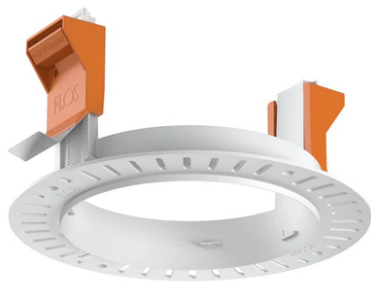
Electrical

Voltage (V)	34	Emergency	Without
Current (mA)	650	Insulation class	III
Dimmable	Yes		
Driver	Remote		
Driver type	Electronic, Electronic dimmable, Electronic dimmable 1-10V, Electronic dimmable DALI		

Physical

Color	Black
Orientation	Fixed
Recessed depth (mm)	150
Weight (kg)	0,48
Spot diameter (mm)	105

Kap Ø105 Fixed Optic Medium



Installation frame No Trim
08.0132.00



Non dimmable continuous current
power supply. 15-30W, 220/240V
-50/60Hz with power currentselected
through adjustableswitch.
60.9592



Continuous current power supply of
13-20W, 110*/240V – 50/60Hz with
power current selected through
adjustable switch. 1-10V or push
dimming.
60.9188



Constant Current Power Supply for
LED. Dimmable DALI. 10-20W
60.8847



Continuous current power supply,
dimmable Casambi, 220/240V –
50/60Hz, 35W – 650mA / 36W – 700 mA.
60.9207