

Kap Ø105 Fixed Optic Medium

05.7101.GL - Gold

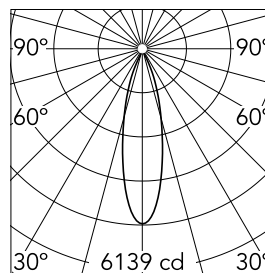
Recessed luminaire with LED light source. Remote transformer not included. Pre-installation frame. To be ordered separately.

Main specifications

| | | | |
|------------------|-------|----------------|------------------|
| Number of heads | 1 | CRI | 90 |
| Lamp category | LED | Net lumen (lm) | 1528 |
| Power (W) | 25.9W | Mountings | Ceiling recessed |
| System power (W) | 25.9 | Environment | Indoor |
| CCT (K) | 2700K | | |

Optical

| | |
|------------------------|-----------|
| Lighting type | Direct |
| LED type | LED array |
| Light distribution | Symmetric |
| Optical type | Medium |
| Beam angle (°) | 26 |
| Beam angle C90-270 (°) | 26 |
| Efficiency (lm/W) | 58 |



Beam Angle: 26°

| h(m) | E(lx) | D(m) |
|------|-------|------|
| 1 | 6139 | 0.46 |
| 2 | 1535 | 0.93 |
| 3 | 682 | 1.39 |
| 4 | 384 | 1.86 |
| 5 | 246 | 2.32 |

Luminous flux luminaire
1528 lm (EXTREME CUT OFF)

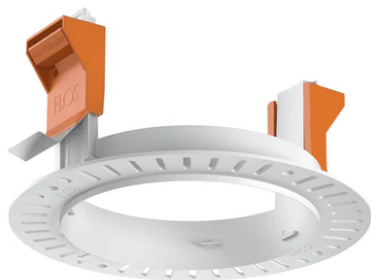
Electrical

| | | | |
|--------------|--|------------------|---------|
| Voltage (V) | 34 | Emergency | Without |
| Current (mA) | 650 | Insulation class | III |
| Dimmable | Yes | | |
| Driver | Remote | | |
| Driver type | Electronic, Electronic dimmable, Electronic dimmable 1-10V, Electronic dimmable DALI | | |

Physical

| | |
|---------------------|-------|
| Color | Gold |
| Orientation | Fixed |
| Recessed depth (mm) | 150 |
| Weight (kg) | 0,48 |
| Spot diameter (mm) | 105 |

Kap Ø105 Fixed Optic Medium



Installation frame No Trim
08.0132.00



Non dimmable continuous current
power supply. 15-30W, 220/240V
-50/60Hz with power current selected
through adjustable switch.
60.9592



Continuous current power supply of
13-20W, 110*/240V – 50/60Hz with
power current selected through
adjustable switch. 1-10V or push
dimming.
60.9188



Constant Current Power Supply for
LED. Dimmable DALI. 10-20W
60.8847



Continuous current power supply,
dimmable Casambi, 220/240V –
50/60Hz, 35W – 650mA / 36W – 700 mA.
60.9207