

Kap Ø105 Fixed Optic Flood

■ 05.7107.CU - Copper

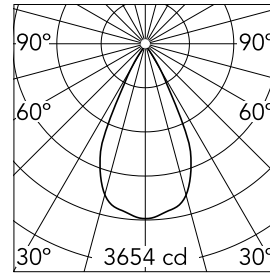
Recessed luminaire with LED light source. Remote transformer not included. Pre-installation frame. To be ordered separately.

Main specifications

Number of heads	1	CRI	90
Lamp category	LED	Mountings	Ceiling recessed
Power (W)	23W	Environment	Indoor
System power (W)	25.9		
CCT (K)	3000K		

Optical

Lighting type	Direct
LED type	LED array
Light distribution	Symmetric
Optical type	Flood
Beam angle (°)	53
Beam angle C90-270 (°)	53



Beam Angle:	51°	
h(m)	E(lx)	D(m)
1	3654	0.96
2	914	1.91
3	406	2.87
4	228	3.82
5	146	4.78

Luminous flux luminaire
2407 lm (EXTREME CUT OFF)

Electrical

Voltage (V)	34	Emergency	Without
Current (mA)	650	Insulation class	III
Dimmable	Yes		
Driver	Remote		
Driver type	Electronic, Electronic dimmable, Electronic dimmable 1-10V, Electronic dimmable DALI		

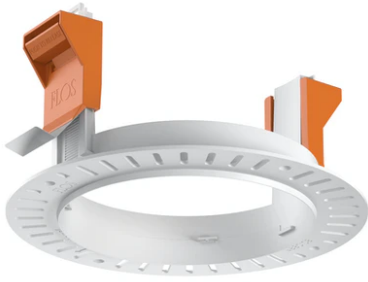
Certification / Marking



Physical

Color	Copper	Length (mm)	105
Orientation	Fixed		
Recessed depth (mm)	150		
Weight (kg)	0,48		
Spot diameter (mm)	105		

Kap Ø105 Fixed Optic Flood



Installation frame No Trim
08.0132.00



Non dimmable continuous current
power supply. 15-30W, 220/240V
-50/60Hz with power current selected
through adjustable switch.
60.9592



Continuous current power supply of
13-20W, 110*/240V – 50/60Hz with
power current selected through
adjustable switch. Synchronisation
cables not included.
60.9188



Constant Current Power Supply for
LED. Dimmable DALI. 10-20W
60.8847



Power supply Casambi. 21.5W-32W
60.9207