

## Kap Ø105 Fixed Optic Flood

■ 05.7107.BU - Blue

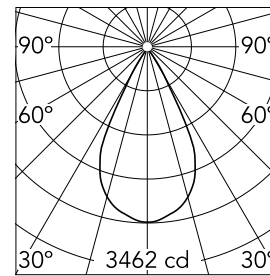
Recessed luminaire with LED light source. Remote transformer not included. Pre-installation frame. To be ordered separately.

### Main specifications

Number of heads	1	CRI	90
Lamp category	LED	Net lumen (lm)	2326
Power (W)	25.9W	Mountings	Ceiling recessed
System power (W)	25.9	Environment	Indoor
CCT (K)	3000K		

### Optical

Lighting type	Direct
LED type	LED array
Light distribution	Symmetric
Optical type	Flood
Beam angle (°)	53
Beam angle C90-270 (°)	53



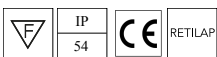
Beam Angle:	53°	
h(m)	E(lx)	D(m)
1	3462	1.01
2	866	2.01
3	385	3.02
4	216	4.03
5	138	5.04

Luminous flux luminaire  
2326 lm (EXTREME CUT OFF)

### Electrical

Voltage (V)	34	Emergency	Without
Current (mA)	650	Insulation class	III
Dimmable	Yes		
Driver	Remote		
Driver type	Electronic, Electronic dimmable, Electronic dimmable 1-10V, Electronic dimmable DALI		

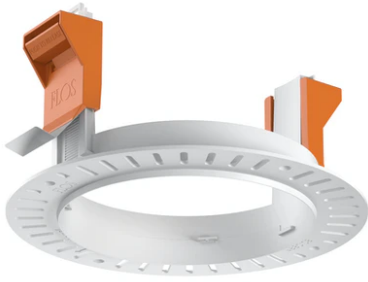
### Certification / Marking



### Physical

Color	Blue	Length (mm)	105
Orientation	Fixed		
Recessed depth (mm)	150		
Weight (kg)	0,48		
Spot diameter (mm)	105		

## Kap Ø105 Fixed Optic Flood



---

Installation frame No Trim  
08.0132.00



---

Non dimmable continuous current  
power supply. 15-30W, 220/240V  
-50/60Hz with power current selected  
through adjustable switch.  
60.9592



---

Continuous current power supply of  
13-20W, 110\*/240V – 50/60Hz with  
power current selected through  
adjustable switch. Synchronisation  
cables not included.  
60.9188



---

Constant Current Power Supply for  
LED. Dimmable DALI. 10-20W  
60.8847



---

Power supply Casambi. 21.5W-32W  
60.9207