

## Kap Ø105 Fixed

■ 05.7131.74 - Black

Recessed luminaire with main voltage source.

### Main specifications

Lamp category	LED
Power (W)	max 50W
System power (W)	25.9
Mountings	Ceiling recessed
Environment	Indoor

### Optical

Lighting type	Direct
Lamp type	PAR 16
Light distribution	Symmetric

### Electrical

Frequency (Hz)	50/60
Voltage (V)	230
Lamp holder	GZ10
Emergency	Without
Insulation class	II

### Physical

Color	Black	Length (mm)	105
Orientation	Fixed		
Recessed depth (mm)	155		
Weight (kg)	0,23		
Spot diameter (mm)	105		

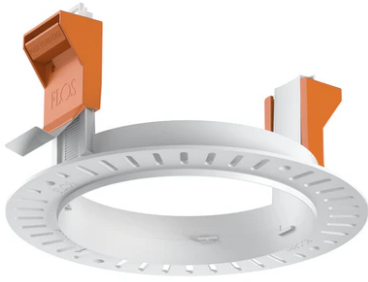
### Note

Not suitable for lens accessories.

### Certification / Marking



## Kap Ø105 Fixed



---

Installation frame No Trim  
08.0132.00