

## Kap Ø105 Fixed

■ 05.7130.GL - Gold

Recessed 12V lamp luminaire. Remote transformer not included.

### Main specifications

|                  |                  |
|------------------|------------------|
| Lamp category    | LED              |
| Power (W)        | max 50W          |
| System power (W) | 25.9             |
| Mountings        | Ceiling recessed |
| Environment      | Indoor           |

### Optical

|                    |           |
|--------------------|-----------|
| Lighting type      | Direct    |
| Lamp type          | QR-CBC 51 |
| Light distribution | Symmetric |

### Electrical

|                  |         |
|------------------|---------|
| Frequency (Hz)   | 50/60   |
| Voltage (V)      | 12      |
| Lamp holder      | GX5.3   |
| Emergency        | Without |
| Insulation class | II      |

### Physical

|                     |       |             |     |
|---------------------|-------|-------------|-----|
| Color               | Gold  | Length (mm) | 105 |
| Orientation         | Fixed |             |     |
| Recessed depth (mm) | 130   |             |     |
| Weight (kg)         | 0,23  |             |     |
| Spot diameter (mm)  | 105   |             |     |

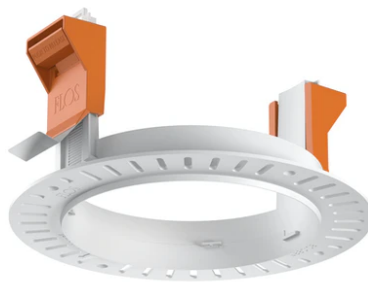
### Note

Not suitable for lens accessories.

### Certification / Marking



## Kap Ø105 Fixed



---

12V Electronic Transformer 20-70W for  
LED Bulbs and Halogen Lamps  
60.9398

---

Installation frame No Trim  
08.0132.00

---

12V electronic transformer. 220/240V,  
50/60Hz. 35-105W  
60.9424