

Kap Ø105 Deep

■ 05.7155.CU - Copper

Recessed luminaire with LED light source. Remote electronic transformer 220/240V not included. Pre-installation frame. To be ordered separately.

Recessed luminaire with LED light source. Remote electronic transformer 220/240V not included. Pre-installation frame. To be ordered separately.

Main specifications

Number of heads	1	CRI	90
Lamp category	LED	Mountings	Ceiling recessed
Power (W)	23W	Environment	Indoor
System power (W)	25.9		
CCT (K)	3000K		

Optical

Lighting type	Direct
LED type	LED array
Light distribution	Symmetric
Optical type	Spot

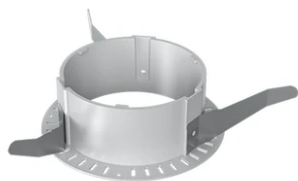
Electrical

Voltage (V)	34	Emergency	Without
Current (mA)	650	Insulation class	III
Dimmable	Yes		
Driver	Remote		
Driver type	Electronic, Electronic dimmable, Electronic dimmable 1-10V, Electronic dimmable DALI		

Physical

Color	Copper
Orientation	Fixed
Recessed depth (mm)	190
Weight (kg)	0,48
Spot diameter (mm)	106

Kap Ø105 Deep



Installation frame No Trim
08.9104.00



Installation can for concrete
08.8420.00



Non dimmable continuous current power supply. 15-30W, 220/240V -50/60Hz with power current selected through adjustable switch. 350mA – 15W / 400mA – 17W / 450mA – 19W / 500mA – 22W / 550mA – 24W / 600mA – 26W / 650mA – 28W / 700mA – 30W no regulable
60.9592



Continuous current power supply, 0/1-10V dimmable, 220/240V – 50/60Hz, 36W – 700 mA
60.9439



Continuous current supply source of 240V – 50/60Hz with dimmable DALI 2
60.9186



Continuous current power supply, dimmable Casambi, 220/240V – 50/60Hz, 35W – 650mA / 36W – 700 mA.
60.9207