

## Kap Ø105 Deep

05.7151.B1 - White

Recessed luminaire with LED light source. Remote electronic transformer 220/240V not included. Pre-installation frame. To be ordered separately.

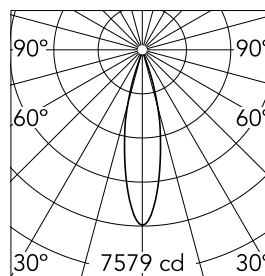
Recessed luminaire with LED light source. Remote electronic transformer 220/240V not included. Pre-installation frame. To be ordered separately.

### Main specifications

Number of heads	1	CRI	90
Lamp category	LED	Net lumen (lm)	1537
Power (W)	23W	Mountings	Ceiling recessed
System power (W)	25.9	Environment	Indoor
CCT (K)	2700K		

### Optical

Lighting type	Direct
LED type	LED array
Light distribution	Symmetric
Optical type	Medium
Beam angle (°)	24
Beam angle C90-270 (°)	24
Efficiency (lm/W)	41



Beam Angle: 24°

h(m)	E(lx)	D(m)
1	7579	0.42
2	1895	0.84
3	842	1.26
4	474	1.69
5	303	2.11

Luminous flux luminaire  
1537 lm (EXTREME CUT OFF)

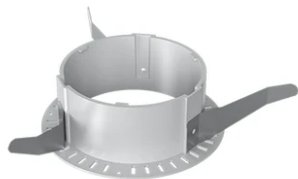
### Electrical

Voltage (V)	34	Emergency	Without
Current (mA)	650	Insulation class	III
Dimmable	Yes		
Driver	Remote		
Driver type	Electronic, Electronic dimmable, Electronic dimmable 1-10V, Electronic dimmable DALI		

### Physical

Color	White
Orientation	Fixed
Recessed depth (mm)	190
Weight (kg)	0,48
Spot diameter (mm)	106

## Kap Ø105 Deep



Installation frame No Trim  
08.9104.00



Installation can for concrete  
08.8420.00



Non dimmable continuous current power supply. 15-30W, 220/240V -50/60Hz with power currentselected through adjustableswitch. 350mA – 15W / 400mA – 17W / 450mA – 19W / 500mA – 22W / 550mA – 24W / 600mA – 26W / 650mA – 28W / 700mA – 30W no regulable  
60.9592



Continuous current power supply, 0/1-10V dimmable, 220/240V – 50/60Hz, 36W – 700 mA  
60.9439



Continuous current supply source of 240V – 50/60Hz with dimmable DALI 2  
60.9186



Continuous current power supply, dimmable Casambi, 220/240V – 50/60Hz, 35W – 650mA / 36W – 700 mA.  
60.9207