

## Kap Ø105 Adjustable Optic Medium

■ 05.7111.CU - Copper

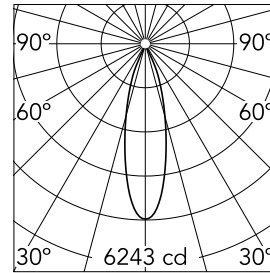
Recessed luminaire with LED light source. Remote transformer not included. Pre-installation frame. To be ordered separately.

### Main specifications

Number of heads	1	CRI	90
Lamp category	LED	Mountings	Ceiling recessed
Power (W)	23W	Environment	Indoor
System power (W)	25.9		
CCT (K)	2700K		

### Optical

Lighting type	Direct
LED type	LED array
Light distribution	Symmetric
Optical type	Medium
Beam angle (°)	27
Beam angle C90-270 (°)	27



Beam Angle:	27°	
h(m)	E(lx)	D(m)
1	6243	0.48
2	1561	0.97
3	694	1.45
4	390	1.93
5	250	2.41

Luminous flux luminaire  
1675 lm (EXTREME CUT OFF)

### Electrical

Voltage (V)	34	Emergency	Without
Current (mA)	650	Insulation class	III
Dimmable	Yes		
Driver	Remote		
Driver type	Electronic, Electronic dimmable, Electronic dimmable 1-10V, Electronic dimmable DALI		

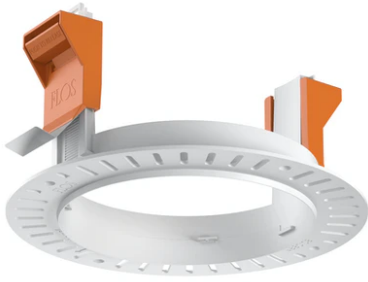
### Certification / Marking



### Physical

Color	Copper	Rotation (°)	360
Orientation	Adjustable	Spot diameter (mm)	105
Recessed depth (mm)	144	Length (mm)	105
Weight (kg)	0,7		
Tilt (°)	20		

## Kap Ø105 Adjustable Optic Medium



---

Installation frame No Trim  
08.0132.00



---

Non dimmable continuous current  
power supply. 15-30W, 220/240V  
-50/60Hz with power current selected  
through adjustable switch.  
60.9592



---

Continuous current power supply of  
13-20W, 110\*/240V – 50/60Hz with  
power current selected through  
adjustable switch. Synchronisation  
cables not included.  
60.9188



---

Constant Current Power Supply for  
LED. Dimmable DALI. 10-20W  
60.8847



---

Power supply Casambi. 21.5W-32W  
60.9207