

## Kap Ø105 Adjustable Optic Flood

■ 05.7112.74 - Black

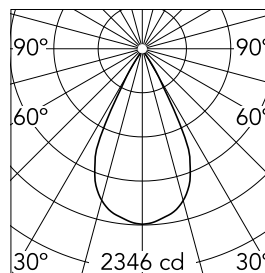
Recessed luminaire with LED light source. Remote transformer not included. Pre-installation frame. To be ordered separately.

### Main specifications

Number of heads	1	CRI	90
Lamp category	LED	Net lumen (lm)	1566
Power (W)	25.9W	Mountings	Ceiling recessed
System power (W)	25.9	Environment	Indoor
CCT (K)	2700K		

### Optical

Lighting type	Direct
LED type	LED array
Light distribution	Symmetric
Optical type	Flood
Beam angle (°)	53
Beam angle C90-270 (°)	53
Efficiency (lm/W)	60



Beam Angle: 53°

h(m)	E(lx)	D(m)
1	2346	1.00
2	587	2.01
3	261	3.01
4	147	4.02
5	94	5.02

Luminous flux luminaire  
1566 lm (EXTREME CUT OFF)

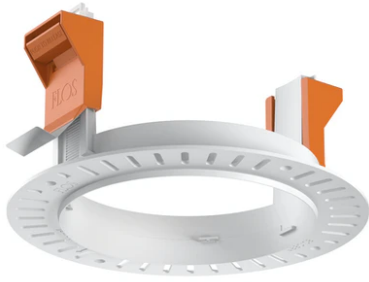
### Electrical

Voltage (V)	34	Emergency	Without
Current (mA)	650	Insulation class	III
Dimmable	Yes		
Driver	Remote		
Driver type	Electronic, Electronic dimmable, Electronic dimmable 1-10V, Electronic dimmable DALI		

### Physical

Color	Black	Rotation (°)	360
Orientation	Adjustable	Spot diameter (mm)	105
Recessed depth (mm)	144		
Weight (kg)	0,7		
Tilt (°)	20		

## Kap Ø105 Adjustable Optic Flood



---

Installation frame No Trim  
08.0132.00



---

Non dimmable continuous current  
power supply. 15-30W, 220/240V  
-50/60Hz with power current selected  
through adjustable switch.  
60.9592



---

Continuous current power supply of  
13-20W, 110\*/240V – 50/60Hz with  
power current selected through  
adjustable switch. 1-10V or push  
dimming.  
60.9188



---

Constant Current Power Supply for  
LED. Dimmable DALI. 10-20W  
60.8847



---

Continuous current power supply,  
dimmable Casambi, 220/240V –  
50/60Hz, 35W – 650mA / 36W – 700 mA.  
60.9207