

## Kap Ø105 Adjustable

■ 05.7136.BU - Blue

Recessed luminaire with main voltage source.

### Main specifications

Lamp category	LED
Power (W)	max 50W
System power (W)	25.9
Mountings	Ceiling recessed
Environment	Indoor

### Optical

Lighting type	Direct
Lamp type	PAR 16
Light distribution	Symmetric

### Electrical

Frequency (Hz)	50/60
Voltage (V)	230
Lamp holder	GZ10
Emergency	Without
Insulation class	II

### Physical

Color	Blue	Rotation (°)	360
Orientation	Adjustable	Spot diameter (mm)	105
Recessed depth (mm)	155	Length (mm)	105
Weight (kg)	0,45		
Tilt (°)	20		

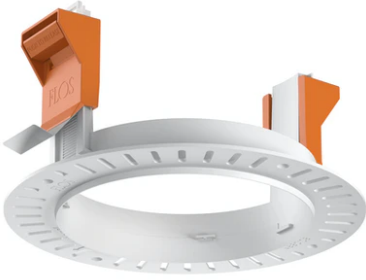
### Note

Not suitable for lens accessories.

### Certification / Marking



## Kap Ø105 Adjustable



---

Installation frame No Trim  
08.0132.00