

Kap Ø105 Adjustable

■ 05.7135.BU - Blue

Recessed 12V lamp luminaire. Remote transformer not included.

Main specifications

Lamp category	LED
Power (W)	max 50W
System power (W)	25.9
Mountings	Ceiling recessed
Environment	Indoor

Optical

Lighting type	Direct
Lamp type	QR-CBC 51
Light distribution	Symmetric

Electrical

Frequency (Hz)	50/60
Voltage (V)	12
Lamp holder	GX5.3
Emergency	Without
Insulation class	II

Physical

Color	Blue	Rotation (°)	360
Orientation	Adjustable	Spot diameter (mm)	105
Recessed depth (mm)	130	Length (mm)	105
Weight (kg)	0,45		
Tilt (°)	20		

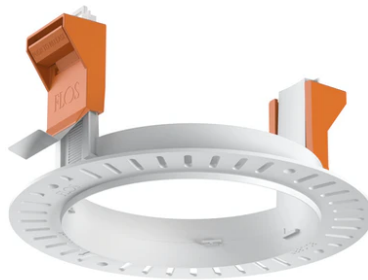
Note

Not suitable for lens accessories.

Certification / Marking



Kap Ø105 Adjustable



12V Electronic Transformer 20-70W for
LED Bulbs and Halogen Lamps
60.9398

Installation frame No Trim
08.0132.00

12V electronic transformer. 220/240V,
50/60Hz. 35-105W
60.9424