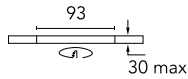
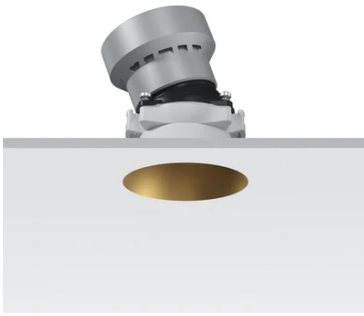


## Kap Ø 50 Adjustable Optic Medium

■ 05.7316.GL - Gold

Recessed luminaire with LED light source. Power supply not included. Remote power supply to be installed in an accessible place.

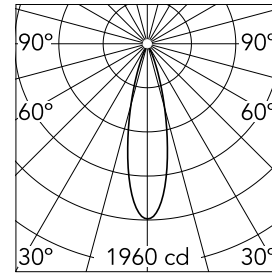


### Main specifications

<b>Number of heads</b>	1	<b>Net lumen (lm)</b>	485
<b>Lamp category</b>	LED	<b>Mountings</b>	Ceiling recessed
<b>Power (W)</b>	7.5W	<b>Environment</b>	Indoor
<b>CCT (K)</b>	3000K		
<b>CRI</b>	90		

### Optical

<b>Lighting type</b>	Direct
<b>LED type</b>	LED array
<b>Light distribution</b>	Symmetric
<b>Optical type</b>	Medium
<b>Beam angle (°)</b>	26
<b>Beam angle C90-270 (°)</b>	26
<b>Efficiency (lm/W)</b>	56



Beam Angle: 26°

h(m)	E(lx)	D(m)
1	1960	0.45
2	490	0.91
3	218	1.36
4	122	1.82
5	78	2.27

Luminous flux luminaire  
485 lm (EXTREME CUT OFF)

### Electrical

<b>Voltage (V)</b>	35	<b>Emergency</b>	Without
<b>Current (mA)</b>	200	<b>Insulation class</b>	III
<b>Dimmable</b>	Yes		
<b>Driver</b>	Remote		
<b>Driver type</b>	Electronic, Electronic dimmable, Electronic dimmable 1-10V, Electronic dimmable DALI		

### Physical

<b>Color</b>	Gold	<b>Rotation (°)</b>	360
<b>Orientation</b>	Adjustable	<b>Spot diameter (mm)</b>	54
<b>Recessed depth (mm)</b>	100		
<b>Weight (kg)</b>	0,162		
<b>Tilt (°)</b>	20		

### Note

Pre-installation frame. To be ordered separately.

## Kap Ø 50 Adjustable Optic Medium



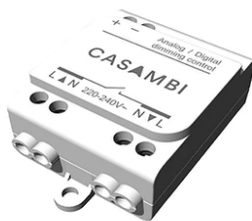
Non dimmable continuous current power supply of 220/240V – 50/60Hz with power current selected through adjustable with switch 200 mA – 8,5W / 300 mA – 13W / 350 mA – 15W / 400 mA – 17,5W / 450 mA – 19,5W / 500 mA – 22W  
60.9160



Continuous current power supply, 0-10V dimmable, 220/240V – 50/60Hz, 200mA – 20W  
60.9483



Continuous current power supply, dimmable DALI 2, 220/240V – 50/60Hz, 200mA – 20W  
60.9604



Casambi Controller 220-240V. Remote Installation  
60.9392



Continuous current power supply. 220/240V – 50/60Hz. Adjustable Current 150 mA – 7,2W / 200 mA – 9,5W / 250 mA – 12W / 300 mA -14,5W / 350 mA -17W/400 mA – 19,5W / 450 mA -21,5W / 500 mA – 24W. Mains or push dimming  
60.9421



Installation frame No Trim  
08.9114.00