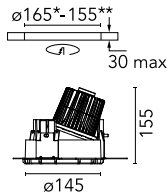


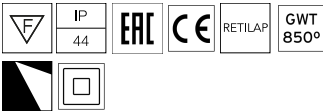
Kap Ø 145 Wall-Washer Dali

■ 03.4589.CU.DA - Copper

Recessed luminaire with LED light source. Remote electronic transformer 220/240V included.



*NO TRIM
**TRIM

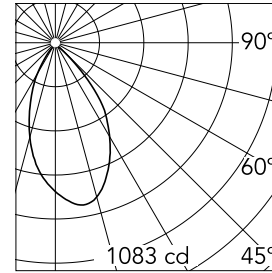


Main specifications

Number of heads	1	CRI	90
Lamp category	LED	Net lumen (lm)	1117
Power (W)	17W	Mountings	Ceiling recessed
System power (W)	17	Environment	Indoor dry location
CCT (K)	2700K		

Optical

Lighting type	Indirect, Direct
LED type	LED array
Light distribution	Asymmetric
Optical type	Wall Washer
	Down
Beam angle (°)	58
Beam angle C90-270 (°)	67
UGRL	19
Efficiency (lm/W)	65



Beam Angle:	58°		
	h(m)	E(lx)	D(m)
1	1083	1.09	
2	271	2.18	
3	120	3.27	
4	68	4.36	
5	43	5.45	

Luminous flux luminaire
1117 lm (EXTREME CUT OFF)

Electrical

Frequency (Hz)	50/60	Driver type	Dimmable DALI 1
Voltage (V)	27	Emergency	Without
Current (mA)	600	Insulation class	II
Dimmable	Yes		
Driver	Remote included		

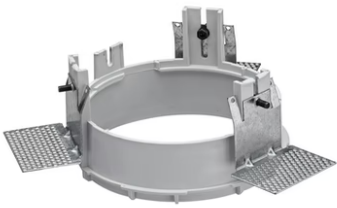
Physical

Color	Copper
Orientation	Fixed
Weight (kg)	0.94
Spot diameter (mm)	145
Lifespan (L70 B10)	L80B50

Note

Pre-installation frame. To be ordered separately.

Kap Ø 145 Wall-Washer Dali



Installation Frame No Trim
08.8251.00



Installation Frame Trim
08.8491.14



Installation Frame Trim
08.8491.BU



Installation Frame Trim
08.8491.30



Installation Frame Trim
08.8491.GL