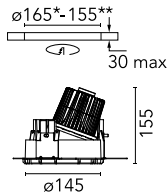


## Kap Ø 145 Wall-Washer 1-10V

■ 03.4475.CUC1V - Copper

Recessed luminaire with LED light source. Remote electronic transformer 220/240V included.



\*NO TRIM  
\*\*TRIM

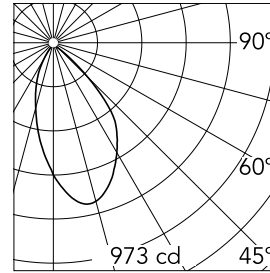


### Main specifications

Number of heads	1	Net lumen (lm)	879
Lamp category	LED	Mountings	Ceiling recessed
Power (W)	17W	Environment	Indoor dry location
CCT (K)	3000K		
CRI	98		

### Optical

Lighting type	Indirect, Direct
LED type	Phosphor LED
Light distribution	Asymmetric
Optical type	Wall Washer
	Down
Beam angle (°)	53
Beam angle C90-270 (°)	56
Efficiency (lm/W)	51



Beam Angle:	53°		
	h(m)	E(lx)	D(m)
1	973	1.10	
2	243	2.21	
3	108	3.31	
4	61	4.42	
5	39	5.52	

Luminous flux luminaire  
879 lm (EXTREME CUT OFF)

### Electrical

Frequency (Hz)	50/60	Emergency	Without
Voltage (V)	18.40	Insulation class	II
Dimmable	Yes		
Driver	Remote included		
Driver type	Dimmable 1-10V		

### Physical

Color	Copper
Orientation	Fixed
Weight (kg)	0.94
Spot diameter (mm)	145

### Note

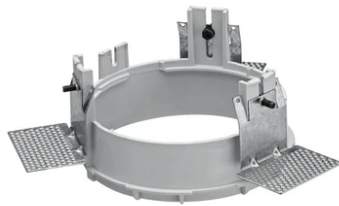
Pre-installation frame. To be ordered separately.

## Kap Ø 145 Wall-Washer 1-10V



---

Installation Frame Trim  
08.8491.30



---

Installation Frame No Trim  
08.8251.00



---

Installation Frame Trim  
08.8491.14



---

Installation Frame Trim  
08.8491.BU



---

Installation Frame Trim  
08.8491.GL