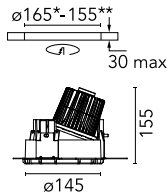


Kap Ø 145 Wall-Washer

■ 03.4475.BUC - Blue

Recessed luminaire with LED light source. Remote electronic transformer 220/240V included.



*NO TRIM
**TRIM

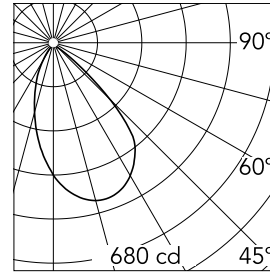


Main specifications

Number of heads	1	Net lumen (lm)	736
Lamp category	LED	Mountings	Ceiling recessed
Power (W)	17W	Environment	Indoor dry location
CCT (K)	3000K		
CRI	98		

Optical

Lighting type	Indirect, Direct
LED type	Phosphor LED
Light distribution	Asymmetric
Optical type	Wall-washer
Beam angle (°)	58
Beam angle C90-270 (°)	65
Efficiency (lm/W)	43



Beam Angle: 58°

h(m)	E(lx)	D(m)
1	680	1.25
2	170	2.51
3	76	3.76
4	43	5.01
5	27	6.26

Luminous flux luminaire
736 lm (EXTREME CUT OFF)

Electrical

Frequency (Hz)	50/60	Emergency	Without
Voltage (V)	18.40	Insulation class	II
Dimmable	No		
Driver	Remote included		
Driver type	Non Dimmable		

Physical

Color	Blue
Orientation	Fixed
Weight (kg)	0.94
Spot diameter (mm)	145

Note

Pre-installation frame. To be ordered separately.

Kap Ø 145 Wall-Washer



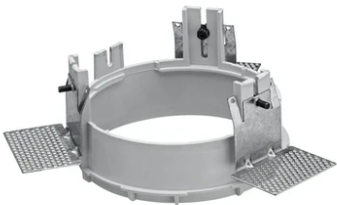
Installation Frame Trim
08.8491.30



Installation Frame Trim
08.8491.GL



Installation Frame Trim
08.8491.14



Installation Frame No Trim
08.8251.00



Installation Frame Trim
08.8491.BU