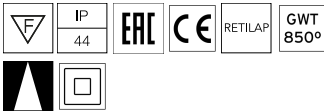


*NO TRIM
**TRIM



Kap Ø 145 Deep Dali

■ 03.4497.BUBDA - Blue

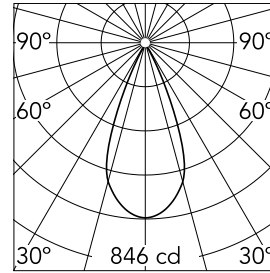
Recessed luminaire with LED light source. Remote electronic transformer 220/240V included.

Main specifications

Number of heads	1	CRI	98
Lamp category	LED	Net lumen (lm)	406
Power (W)	17W	Mountings	Ceiling recessed
System power (W)	17	Environment	Indoor dry location
CCT (K)	2700K		

Optical

Lighting type	Direct
LED type	Phosphor LED
Light distribution	Symmetric
Optical type	Flood
Beam angle (°)	44
Beam angle C90-270 (°)	44
UGRL	3
Efficiency (lm/W)	23



Beam Angle:	44°		
	h(m)	E(lx)	D(m)
1	846	0.80	
2	211	1.60	
3	94	2.39	
4	53	3.19	
5	34	3.99	

Luminous flux luminaire
406 lm (EXTREME CUT OFF)

Electrical

Frequency (Hz)	50/60	Driver type	Dimmable DALI 1
Voltage (V)	22	Emergency	Without
Current (mA)	700	Insulation class	II
Dimmable	Yes		
Driver	Remote included		

Physical

Color	Blue
Orientation	Fixed
Weight (kg)	0.99
Spot diameter (mm)	145
Lifespan (L70 B10)	L80B50

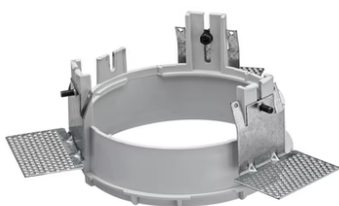
Note

Pre-installation frame. To be ordered separately.

Kap Ø 145 Deep Dali



Installation Frame Trim
08.8491.GL



Installation Frame No Trim
08.8156.00



Installation Frame Trim
08.8491.14



Installation Frame Trim
08.8491.BU



Installation Frame Trim
08.8491.30