

*NO TRIM
**TRIM



Kap Ø 145 Deep 1-10V

03.4587.B1.1V - White

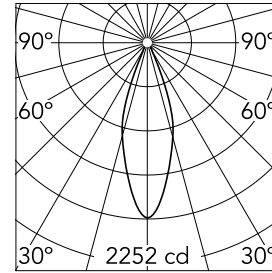
Recessed luminaire with LED light source. Remote electronic transformer 220/240V included.

Main specifications

Number of heads	1	Net lumen (lm)	936
Lamp category	LED	Mountings	Ceiling recessed
Power (W)	17W	Environment	Indoor dry location
CCT (K)	2700K		
CRI	90		

Optical

Lighting type	Direct
LED type	LED array
Light distribution	Symmetric
Optical type	Medium
Beam angle (°)	34
Beam angle C90-270 (°)	34
Efficiency (lm/W)	55



Beam Angle: 34°		
h(m)	E(lx)	D(m)
1	2252	0.61
2	563	1.23
3	250	1.84
4	141	2.45
5	90	3.06

Luminous flux luminaire
936 lm (EXTREME CUT OFF)

Electrical

Frequency (Hz)	50/60	Emergency	Without
Voltage (V)	27.40	Insulation class	II
Dimmable	Yes		
Driver	Remote included		
Driver type	Dimmable 1-10V		

Physical

Color	White
Orientation	Fixed
Weight (kg)	0.99
Spot diameter (mm)	145

Note

Pre-installation frame. To be ordered separately.

Kap Ø 145 Deep 1-10V



Installation Frame Trim
08.8491.30



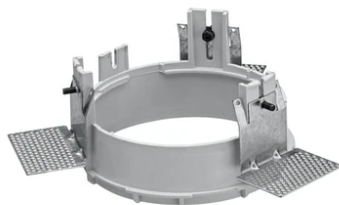
Installation Frame Trim
08.8491.14



Installation Frame Trim
08.8491.BU



Installation Frame Trim
08.8491.GL



Installation Frame No Trim
08.8156.00