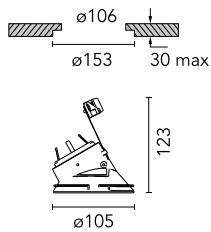


Kap Ø 105 Wall-Washer

■ 05.7140.CU - Copper

Recessed 12V LED lamp luminaire. Remote transformer not included.



Main specifications

Lamp category	LED
System power (W)	25.9
Mountings	Ceiling recessed
Environment	Indoor dry location

Optical

Lighting type	Direct
Lamp type	QR-CBC 51
Light distribution	Asymmetric
Optical type	Wall Washer Down

Electrical

Frequency (Hz)	50/60	Emergency	Without
Voltage (V)	12	Insulation class	II
Lamp holder	GX5.3		
Driver	Remote excluded		
Driver type	Electronic 12V		

Physical

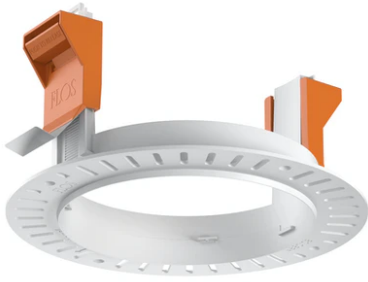
Color	Copper
Orientation	Fixed
Recessed depth (mm)	130
Weight (kg)	0,21
Spot diameter (mm)	105

Note

Not suitable for lens accessories.



Kap Ø 105 Wall-Washer



Installation frame No Trim
08.0132.00



12V Electronic Transformer 20-70W for
LED Bulbs and Halogen Lamps
60.9398



12V electronic transformer. 220/240V,
50/60Hz. Adjustable by means of
"leading and trailing edge"
60.9424