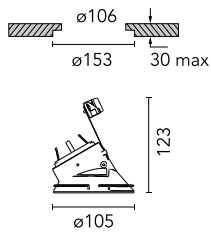


## Kap Ø 105 Wall-Washer

05.7140.B1 - White

Recessed 12V LED lamp luminaire. Remote transformer not included.



### Main specifications

|                  |                     |
|------------------|---------------------|
| Lamp category    | LED                 |
| System power (W) | 25.9                |
| Mountings        | Ceiling recessed    |
| Environment      | Indoor dry location |

### Optical

|                    |             |
|--------------------|-------------|
| Lighting type      | Direct      |
| Lamp type          | QR-CBC 51   |
| Light distribution | Asymmetric  |
| Optical type       | Wall-washer |

### Electrical

|                |                 |                  |         |
|----------------|-----------------|------------------|---------|
| Frequency (Hz) | 50/60           | Emergency        | Without |
| Voltage (V)    | 12              | Insulation class | II      |
| Lamp holder    | GX5.3           |                  |         |
| Driver         | Remote excluded |                  |         |
| Driver type    | Electronic 12V  |                  |         |

### Physical

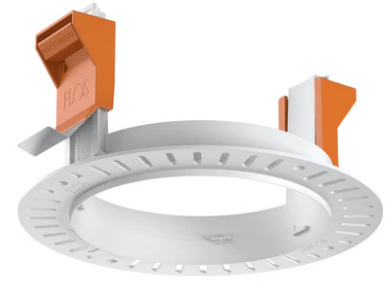
|                     |       |
|---------------------|-------|
| Color               | White |
| Orientation         | Fixed |
| Recessed depth (mm) | 130   |
| Weight (kg)         | 0,21  |
| Spot diameter (mm)  | 105   |

### Note

Not suitable for lens accessories.



## Kap Ø 105 Wall-Washer



---

12V electronic transformer. 220/240V,  
50/60Hz. Adjustable by means of  
"leading and trailing edge"  
60.9424

---

12V Electronic Transformer 20-70W for  
LED Bulbs and Halogen Lamps  
60.9398

---

Installation frame No Trim  
08.0132.00