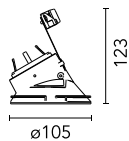
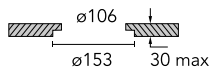
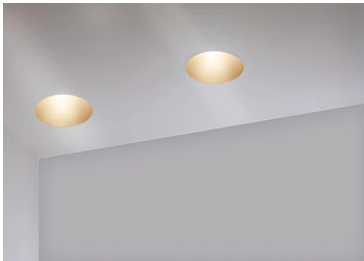


## Kap Ø 105 Wall-Washer

■ 05.7140.74 - Black

Recessed 12V LED lamp luminaire. Remote transformer not included.



### Main specifications

Lamp category	LED
System power (W)	25.9
Mountings	Ceiling recessed
Environment	Indoor dry location

### Optical

Lighting type	Direct
Lamp type	QR-CBC 51
Light distribution	Asymmetric
Optical type	Wall Washer Down

### Electrical

Frequency (Hz)	50/60	Emergency	Without
Voltage (V)	12	Insulation class	II
Lamp holder	GX5.3		
Driver	Remote excluded		
Driver type	Electronic 12V		

### Physical

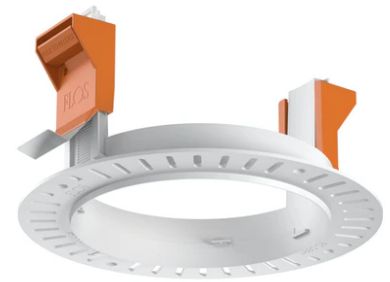
Color	Black
Orientation	Fixed
Recessed depth (mm)	130
Weight (kg)	0,21
Spot diameter (mm)	105

### Note

Not suitable for lens accessories.



## Kap Ø 105 Wall-Washer



---

12V Electronic Transformer 20-70W for  
LED Bulbs and Halogen Lamps  
60.9398

---

12V electronic transformer. 220/240V,  
50/60Hz. Adjustable by means of  
"leading and trailing edge"  
60.9424

---

Installation frame No Trim  
08.0132.00