

Kap Ø 105 Fixed

■ 05.7131.BU - Blue

Recessed luminaire with main voltage source.

Main specifications

Lamp category	LED
Power (W)	max 50W
System power (W)	25.9
Mountings	Ceiling recessed
Environment	Indoor dry location

Optical

Lighting type	Direct
Lamp type	PAR16
Light distribution	Symmetric

Electrical

Frequency (Hz)	50/60
Voltage (V)	230
Lamp holder	GZ10
Emergency	Without
Insulation class	II

Physical

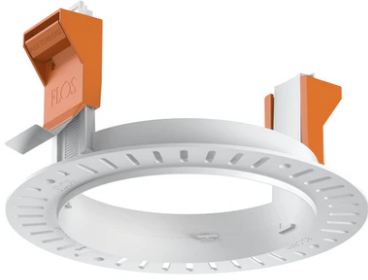
Color	Blue
Orientation	Fixed
Recessed depth (mm)	155
Weight (kg)	0,23
Spot diameter (mm)	105

Note

Not suitable for lens accessories.



Kap Ø 105 Fixed



Installation frame No Trim
08.0132.00