

Kap Ø 105 Fixed

■ 05.7130.GL - Gold

Recessed 12V lamp luminaire. Remote transformer not included.

Main specifications

| | |
|------------------|---------------------|
| Lamp category | LED |
| Power (W) | max 50W |
| System power (W) | 25.9 |
| Mountings | Ceiling recessed |
| Environment | Indoor dry location |

Optical

| | |
|--------------------|-----------|
| Lighting type | Direct |
| Lamp type | QR-CBC 51 |
| Light distribution | Symmetric |

Electrical

| | | | |
|----------------|-----------------|------------------|---------|
| Frequency (Hz) | 50/60 | Emergency | Without |
| Voltage (V) | 12 | Insulation class | II |
| Lamp holder | GX5.3 | | |
| Driver | Remote excluded | | |
| Driver type | Electronic 12V | | |

Physical

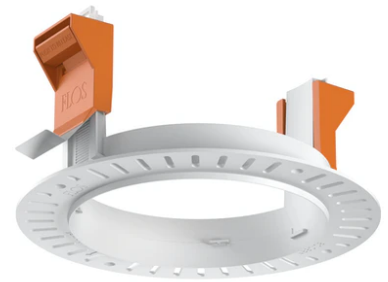
| | |
|---------------------|-------|
| Color | Gold |
| Orientation | Fixed |
| Recessed depth (mm) | 130 |
| Weight (kg) | 0,23 |
| Spot diameter (mm) | 105 |

Note

Not suitable for lens accessories.



Kap Ø 105 Fixed



12V Electronic Transformer 20-70W for
LED Bulbs and Halogen Lamps
60.9398

12V electronic transformer. 220/240V,
50/60Hz. Adjustable by means of
"leading and trailing edge"
60.9424

Installation frame No Trim
08.0132.00