

## Kap Ø 105 Fixed

■ 05.7130.CU - Copper

Recessed 12V lamp luminaire. Remote transformer not included.

### Main specifications

Lamp category	LED
Power (W)	MAX 6,5W
System power (W)	6.5
Mountings	Ceiling recessed
Environment	Indoor dry location

### Optical

Lighting type	Direct
Lamp type	QR-CBC 51
Light distribution	Symmetric

### Electrical

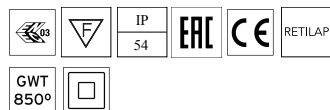
Voltage (V)	12	Emergency	Without
Current (mA)	-9	Insulation class	II
Lamp holder	GX5.3		
Driver	Remote excluded		
Driver type	Electronic 12V		

### Physical

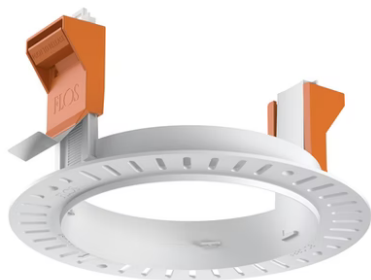
Color	Copper
Orientation	Fixed
Recessed depth (mm)	130
Weight (kg)	0.23
Spot diameter (mm)	105

### Note

Not suitable for lens accessories.



Kap Ø 105 Fixed



Installation frame No Trim  
08.0132.00



12V electronic transformer. 220/240V,  
50/60Hz. Adjustable by means of  
"leading and trailing edge"  
60.9424



12V Electronic Transformer 20-70W for  
LED Bulbs and Halogen Lamps  
60.9398