

## Kap Ø 105 Adjustable Optic Flood

■ 05.7117.CU - Copper

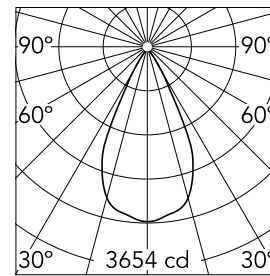
Recessed luminaire with LED light source. Remote transformer not included. Pre-installation frame. To be ordered separately. Diffusing lens included.

### Main specifications

<b>Number of heads</b>	1	<b>CRI</b>	90
<b>Lamp category</b>	LED	<b>Mountings</b>	Ceiling recessed
<b>Power (W)</b>	23W	<b>Environment</b>	Indoor dry location
<b>System power (W)</b>	25,9		
<b>CCT (K)</b>	3000K		

### Optical

<b>Lighting type</b>	Direct
<b>LED type</b>	LED array
<b>Light distribution</b>	Symmetric
<b>Optical type</b>	Flood
<b>Beam angle (°)</b>	53
<b>Beam angle C90-270 (°)</b>	53



<b>Beam Angle:</b>	51°		
<b>h(m)</b>	<b>E(lx)</b>	<b>D(m)</b>	
1	3654	0.96	
2	914	1.91	
3	406	2.87	
4	228	3.82	
5	146	4.78	

Luminous flux luminaire  
2407 lm (EXTREME CUT OFF)

### Electrical

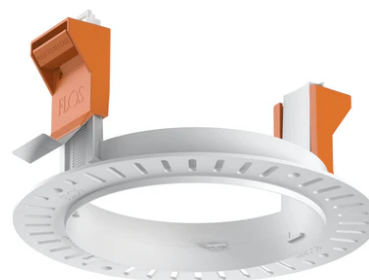
<b>Voltage (V)</b>	34	<b>Emergency</b>	Without
<b>Current (mA)</b>	650	<b>Insulation class</b>	III
<b>Dimmable</b>	Yes		
<b>Driver</b>	Remote excluded		
<b>Driver type</b>	Non Dimmable, Dimmable DALI 2, Dimmable Casambi, Dimmable 1-10V		

### Physical

<b>Color</b>	Copper	<b>Rotation (°)</b>	360
<b>Orientation</b>	Adjustable	<b>Spot diameter (mm)</b>	105
<b>Recessed depth (mm)</b>	144		
<b>Weight (kg)</b>	0,7		
<b>Tilt (°)</b>	20		



## Kap Ø 105 Adjustable Optic Flood



---

Continuous current supply source 240V – 50/60Hz with dimmable DALI 2, push dimming. 300mA-16W / 350mA-18W / 400mA-21W / 500mA-27W / 600mA-32W / 650mA-35W  
700/750/800/900/950/1000/1050mA-38W  
60.9186

---

Continuous current power supply, 0/1-10V dimmable, 220/240V – 50/60Hz, 300mA-16W / 350mA-18W / 400mA-21W / 500mA-27W / 600mA-32W / 650mA-35W / 700/750/800/900/950/1000/1050mA-36W  
60.9439

---

Installation frame No Trim  
08.0132.00



---

Continuous current power supply, dimmable Casambi 220/240V-50/60Hz, 300mA-16W / 350mA-18,5W / 400mA-21,5W / 450mA-24W / 500mA-27W / 600mA-32W / 650mA-35W / 700mA-36W / 750/800/900/1000/1050mA – 38W  
60.9207

---

Non dimmable continuous current power supply. 15-30W, 220/240V -50/60Hz with power current selected through adjustable switch. 350mA – 15W / 400mA – 17W / 450mA – 19W / 500mA – 22W / 550mA – 24W / 600mA – 26W / 650mA – 28W / 700mA – 30W no regulable  
60.9592