

Kap Ø 105 Adjustable Optic Flood

■ 05.7112.GL - Gold

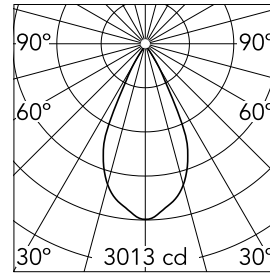
Recessed luminaire with LED light source. Remote transformer not included. Pre-installation frame. To be ordered separately. Diffusing lens included.

Main specifications

Number of heads	1	CRI	90
Lamp category	LED	Net lumen (lm)	1786
Power (W)	25.9W	Mountings	Ceiling recessed
System power (W)	25.9	Environment	Indoor
CCT (K)	2700K		

Optical

Lighting type	Direct
LED type	LED array
Light distribution	Symmetric
Optical type	Flood
Beam angle (°)	50
Beam angle C90-270 (°)	50
Efficiency (lm/W)	68



Beam Angle: 50°

h(m)	E(lx)	D(m)
1	3013	0.93
2	753	1.86
3	335	2.79
4	188	3.72
5	121	4.65

Luminous flux luminaire
1786 lm (EXTREME CUT OFF)

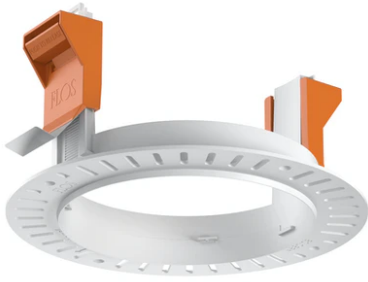
Electrical

Voltage (V)	34	Emergency	Without
Current (mA)	650	Insulation class	III
Dimmable	Yes		
Driver	Remote		
Driver type	Electronic, Electronic dimmable, Electronic dimmable 1-10V, Electronic dimmable DALI		

Physical

Color	Gold	Rotation (°)	360
Orientation	Adjustable	Spot diameter (mm)	105
Recessed depth (mm)	144		
Weight (kg)	0,7		
Tilt (°)	20		

Kap Ø 105 Adjustable Optic Flood



Installation frame No Trim
08.0132.00

Non dimmable continuous current power supply. 15-30W, 220/240V -50/60Hz with power current selected through adjustable switch. 350mA – 15W / 400mA – 17W / 450mA – 19W / 500mA – 22W / 550mA – 24W / 600mA – 26W / 650mA – 28W / 700mA – 30W no regulable
60.9592

Continuous current power supply of 13-20W, 110/240V – 50/60Hz with power current selected through adjustable 300 mA – 15W / 350 mA – 18W / 400/450/500/550/600/ 650/700/750/800/850/900 mA – 15W. switch. 0/1-10V or push dimming
60.9188



Continuous current power supply of 10-20W, 110/240V – 50/60Hz with power current selected through adjustable 250 mA – 10W / 350 mA – 15W / 400 mA – 17W / 450 mA – 19W / 500/550/600/700 mA – 20W, Dali 1 switch.
60.8847

Continuous current power supply, dimmable Casambi, 220/240V – 50/60Hz, 300mA-16W / 350mA-18,5W / 400mA-21,5W / 450mA-24W / 500mA-27W / 600mA-32W / 650mA-35W / 700mA-36W / 750/800/900/1000/1050mA – 38W
60.9207