

Kap Ø 105 Adjustable

■ 05.7136.BU - Blue

Recessed luminaire with main voltage source.

Main specifications

Lamp category	LED
Power (W)	max 50W
System power (W)	25.9
Mountings	Ceiling recessed
Environment	Indoor dry location

Optical

Lighting type	Direct
Lamp type	PAR16
Light distribution	Symmetric

Electrical

Frequency (Hz)	50/60
Voltage (V)	230
Lamp holder	GZ10
Emergency	Without
Insulation class	II

Physical

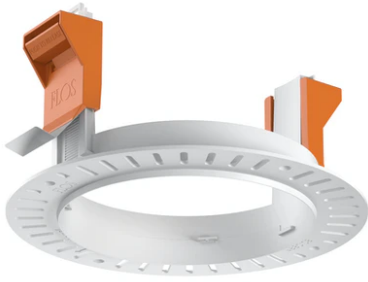
Color	Blue	Rotation (°)	360
Orientation	Adjustable	Spot diameter (mm)	105
Recessed depth (mm)	155		
Weight (kg)	0,45		
Tilt (°)	20		

Note

Not suitable for lens accessories.



Kap Ø 105 Adjustable



Installation frame No Trim
08.0132.00