

Kap Ø 105 Adjustable

■ 05.7135.GL - Gold

Recessed 12V lamp luminaire. Remote transformer not included.

Main specifications

Lamp category	LED
Power (W)	max 50W
System power (W)	25.9
Mountings	Ceiling recessed
Environment	Indoor dry location

Optical

Lighting type	Direct
Lamp type	QR-CBC 51
Light distribution	Symmetric

Electrical

Frequency (Hz)	50/60	Emergency	Without
Voltage (V)	12	Insulation class	II
Lamp holder	GX5.3		
Driver	Remote excluded		
Driver type	Electronic 12V		

Physical

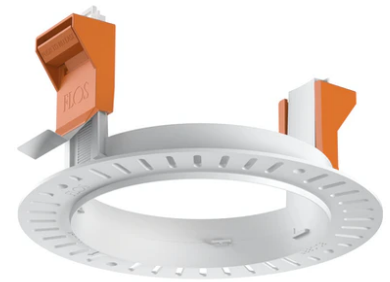
Color	Gold	Rotation (°)	360
Orientation	Adjustable	Spot diameter (mm)	105
Recessed depth (mm)	130		
Weight (kg)	0,45		
Tilt (°)	20		

Note

Not suitable for lens accessories.



Kap Ø 105 Adjustable



12V Electronic Transformer 20-70W for
LED Bulbs and Halogen Lamps
60.9398

12V electronic transformer. 220/240V,
50/60Hz. Adjustable by means of
"leading and trailing edge"
60.9424

Installation frame No Trim
08.0132.00