

Kap Ø 105 Adjustable

05.7135.CU - Copper

Recessed 12V lamp luminaire. Remote transformer not included.

Main specifications

Lamp category	LED
Power (W)	MAX 6,5W
System power (W)	6.5
Mountings	Ceiling recessed
Environment	Indoor dry location

Optical

Lighting type	Direct
Lamp type	QR-CBC 51
Light distribution	Symmetric

Electrical

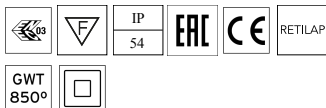
Voltage (V)	12	Emergency	Without
Current (mA)	-9	Insulation class	II
Lamp holder	GX5.3		
Driver	Remote excluded		
Driver type	Electronic 12V		

Physical

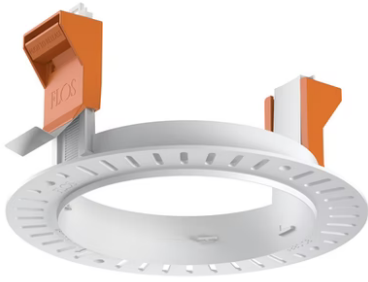
Color	Copper	Rotation (°)	360
Orientation	Adjustable	Spot diameter (mm)	105
Recessed depth (mm)	130		
Weight (kg)	0.45		
Tilt (°)	20		

Note

Not suitable for lens accessories.



Kap Ø 105 Adjustable



Installation frame No Trim
08.0132.00



12V electronic transformer. 220/240V,
50/60Hz. Adjustable by means of
"leading and trailing edge"
60.9424



12V Electronic Transformer 20-70W for
LED Bulbs and Halogen Lamps
60.9398