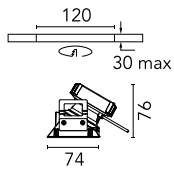


Kap 80 Square Wall-Washer

■ 03.4190.GL - Gold

Recessed luminaire with LED light source. Power supply not included.

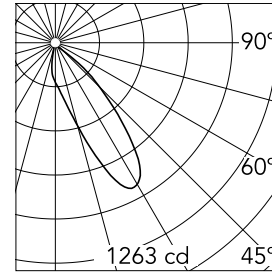


Main specifications

Number of heads	1	CRI	90
Lamp category	LED	Net lumen (lm)	739
Power (W)	8.7W	Mountings	Ceiling recessed
System power (W)	8.7	Environment	Indoor dry location
CCT (K)	3000K		

Optical

Lighting type	Indirect, Direct
LED type	LED array
Light distribution	Asymmetric
Optical type	Wall Washer
	Down
Beam angle (°)	28
Beam angle C90-270 (°)	30
UGRL	21
Efficiency (lm/W)	84



Beam Angle: 28°		
h(m)	E(lx)	D(m)
1	1263	0.68
2	316	1.36
3	140	2.04
4	79	2.72
5	51	3.40

Luminous flux luminaire
739 lm (EXTREME CUT OFF)

Electrical

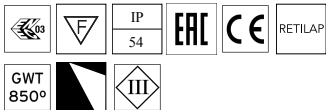
Voltage (V)	18	Emergency	Without
Current (mA)	500	Insulation class	III
Dimmable	Yes		
Driver	Remote excluded		
Driver type	Non Dimmable, Dimmable DALI 2, Dimmable 0-10V, Dimmable Casambi, Dimmable 1-10V, Dimmable DALI 1, Mains Cut Dimming		

Physical

Color	Gold
Orientation	Fixed
Recessed depth (mm)	81
Weight (kg)	0.24
Lifespan (L70 B10)	L80B50

Note

Diffusing lens included.



Kap 80 Square Wall-Washer



Non dimmable continuous current power supply of 220/240V – 50/60Hz with power current selected through adjustable with switch 200 mA – 8,5W / 300 mA – 13W / 350 mA – 15W / 400 mA – 17,5W / 450 mA – 19,5W / 500 mA – 22W
60.9160



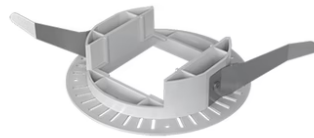
Continuous current power supply of 12-20W, 110/240V – 50/60Hz with power current selected through adjustable 350mA – 17W / 400mA – 19W / 450 / 550 / 600 / 700mA – 20W regulable Dali 1 y Dali 2
60.9222



Continuous current power supply, 1-10V, regulable Mains, leading & trailing edge 220/240V – 50/60Hz, 500mA – 10W
60.9411



Continuous current power supply of 13-20W, 110/240V – 50/60Hz with power current selected through adjustable 300 mA – 15W / 350 mA – 18W / 400/450/500/550/600/ 650/700/750/800/850/900 mA – 15W. switch. 0/1-10V or push dimming
60.9188



Installation frame No Trim
08.9103.00



Continuous current power supply of 10-20W, 110/240V – 50/60Hz with power current selected through adjustable 250 mA – 10W / 350 mA – 15W / 400 mA – 17W / 450 mA – 19W / 500/550/600/700 mA – 20W, Dali 1 switch.
60.8847



Continuous current power supply,
dimmable Casambi 220/240V-50/60Hz,
300mA-16W / 350mA-18,5W / 400mA-
21,5W / 450mA-24W / 500mA-27W /
600mA-32W / 650mA-35W / 700mA-36W
/750/800/900/1000/1050mA – 38W
60.9207